



**Noise Monitoring Result**

**Day Time (0700 - 1900hrs on normal weekdays)**

Location: NMC-01 - G/F, Kei Shun Special School

Date	Weather	Time	Measurement Noise Level			Average Noise Level	Baseline Level	Construction Noise Level	Limit Level
			Leq	L10	L90	Leq	Leq	Leq	Leq
			Unit: dB(A), (5-min)			Unit: dB(A), (30-min)			
4 Jan 2021	Fine	16:08	69.2	71.8	65.7	69	69.3	<Baseline Level	70
		16:13	69.9	72.2	66.9				
		16:18	69.5	71.3	66.4				
		16:23	69.0	71.1	66.0				
		16:28	68.8	71.2	64.9				
		16:33	68.6	70.9	63.8				
11 Jan 2021	Fine	10:34	68.7	71.2	65.4	69	69.3	<Baseline Level	70
		10:39	68.7	71.4	64.3				
		10:44	68.9	70.7	65.4				
		10:49	68.9	71.6	64.6				
		10:54	69.5	72.2	64.8				
		10:59	68.3	70.8	63.6				
18 Jan 2021	Fine	15:28	74.7	80.5	68.3	70	69.3	64	70
		15:33	69.5	71.6	65.9				
		15:38	68.5	70.7	64.8				
		15:43	68.6	70.9	64.7				
		15:48	68.3	70.9	63.7				
		15:53	68.3	70.6	63.0				
25 Jan 2021	Fine	13:12	68.5	71.1	63.5	68	69.3	<Baseline Level	70
		13:17	68.1	69.8	64.9				
		13:22	68.9	71.2	64.3				
		13:27	68.4	70.6	64.7				
		13:32	68.7	71.0	65.0				
		13:37	67.3	69.7	63.3				



**Noise Monitoring Result**

**Day Time (0700 - 1900hrs on normal weekdays)**

Location: NMC-02 - 3/F podium, Shun Lee Disciplined Services Quarters Block 6

Date	Weather	Time	Measurement Noise Level			Average Noise Level	Baseline Level	Construction Noise Level	Limit Level
			Leq	L10	L90	Leq	Leq	Leq	Leq
			Unit: dB(A), (5-min)			Unit: dB(A), (30-min)			
5 Jan 2021	Fine	09:57	73.3	75.5	69.6	74	72.0	68	75
		10:02	73.9	75.8	70.2				
		10:07	73.0	75.4	68.5				
		10:12	73.6	75.7	69.3				
		10:17	73.8	76.0	69.9				
		10:22	73.7	75.7	69.7				
11 Jan 2021	Fine	09:47	72.9	74.9	67.8	73	72.0	65	75
		09:52	72.8	74.9	68.6				
		09:57	71.8	74.1	66.4				
		10:02	72.5	74.5	68.8				
		10:07	72.4	74.5	69.3				
		10:12	73.9	76.3	69.3				
18 Jan 2021	Fine	14:37	77.8	79.6	75.7	77	72.0	75	75
		14:42	76.2	78.3	70.7				
		14:47	77.4	79.0	74.7				
		14:52	74.8	77.3	69.6				
		14:57	78.1	80.2	72.5				
		15:02	74.6	75.4	67.9				
25 Jan 2021	Fine	13:57	71.8	73.8	68.3	72	72.0	<Baseline Level	75
		14:02	71.1	73.9	65.5				
		14:07	72.0	74.4	68.4				
		14:12	71.0	73.5	66.2				
		14:17	72.6	75.2	68.9				
		14:22	72.1	74.2	67.7				



**Noise Monitoring Result**

**Day Time (0700 - 1900hrs on normal weekdays)**

Location: NMC-03 - G/F, Sienna Garden Block 6

Date	Weather	Time	Measurement Noise Level			Average Noise Level	Baseline Level	Construction Noise Level	Limit Level
			Leq	L10	L90	Leq	Leq	Leq	Leq
			Unit: dB(A), (5-min)			Unit: dB(A), (30-min)			
5 Jan 2021	Fine	11:21	77.3	80.3	66.6	77	78.2	<Baseline Level	75
		11:26	76.9	78.8	73.2				
		11:31	76.0	78.4	71.5				
		11:36	76.6	78.7	72.3				
		11:41	76.8	79.0	72.9				
		11:46	76.7	78.7	72.7				
11 Jan 2021	Fine	11:29	75.5	80.1	62.3	76	78.2	<Baseline Level	75
		11:34	74.6	78.7	63.2				
		11:39	76.3	80.5	63.5				
		11:44	75.5	79.6	61.3				
		11:49	75.5	78.8	61.1				
		11:54	75.8	79.8	64.4				
18 Jan 2021	Fine	16:16	77.9	8.1	67.3	77	78.2	<Baseline Level	75
		16:21	75.9	79.5	62.2				
		16:26	76.0	80.0	62.7				
		16:31	77.5	80.9	63.6				
		16:36	76.2	79.6	63.2				
		16:41	75.8	79.7	59.8				
25 Jan 2021	Fine	15:21	73.4	74.0	60.8	75	78.2	<Baseline Level	75
		15:26	74.6	78.0	60.5				
		15:31	75.9	79.3	61.6				
		15:36	74.2	78.2	64.1				
		15:41	75.6	78.2	71.9				
		15:46	75.1	77.2	70.7				



**Noise Monitoring Result**

**Day Time (0700 - 1900hrs on normal weekdays)**

Location: NMC-04 - 3/F Podium, Po Tat Estate Tat Kai House

Date	Weather	Time	Measurement Noise Level			Average Noise Level	Baseline Level	Construction Noise Level	Limit Level
			Leq	L10	L90	Leq	Leq	Leq	Leq
			Unit: dB(A), (5-min)			Unit: dB(A), (30-min)			
4 Jan 2020	Fine	15:14	67.2	68.5	64.9	68	66.6	61	75
		15:19	67.4	68.5	65.5				
		15:24	67.8	69.7	64.5				
		15:29	67.9	69.0	66.5				
		15:34	67.7	68.8	65.9				
		15:39	67.9	69.2	65.8				
11 Jan 2021	Fine	14:35	65.3	67.2	62.5	66	66.6	<Baseline Level	75
		14:40	65.0	65.9	63.8				
		14:45	66.5	67.7	64.9				
		14:50	66.7	67.6	65.3				
		14:55	66.6	67.7	64.9				
		15:00	67.0	68.2	65.4				
18 Jan 2021	Fine	10:57	67.0	68.3	64.9	67	66.6	47	75
		11:02	67.1	68.8	64.1				
		11:07	66.7	68.3	63.6				
		11:12	66.8	68.4	64.2				
		11:17	67.3	68.4	65.9				
		11:22	64.4	65.4	62.3				
25 Jan 2021	Fine	09:44	65.8	67.4	63.0	67	66.6	50	75
		09:49	65.9	67.4	63.9				
		09:54	67.2	68.8	65.2				
		09:59	67.6	69.3	65.7				
		10:04	66.4	67.9	64.0				
		10:09	67.0	68.2	65.2				



**Noise Monitoring Result**

**Day Time (0700 - 1900hrs on normal weekdays)**

Location: NMC-05 - G/F, Hong Wah Court Block B Yee Hong House

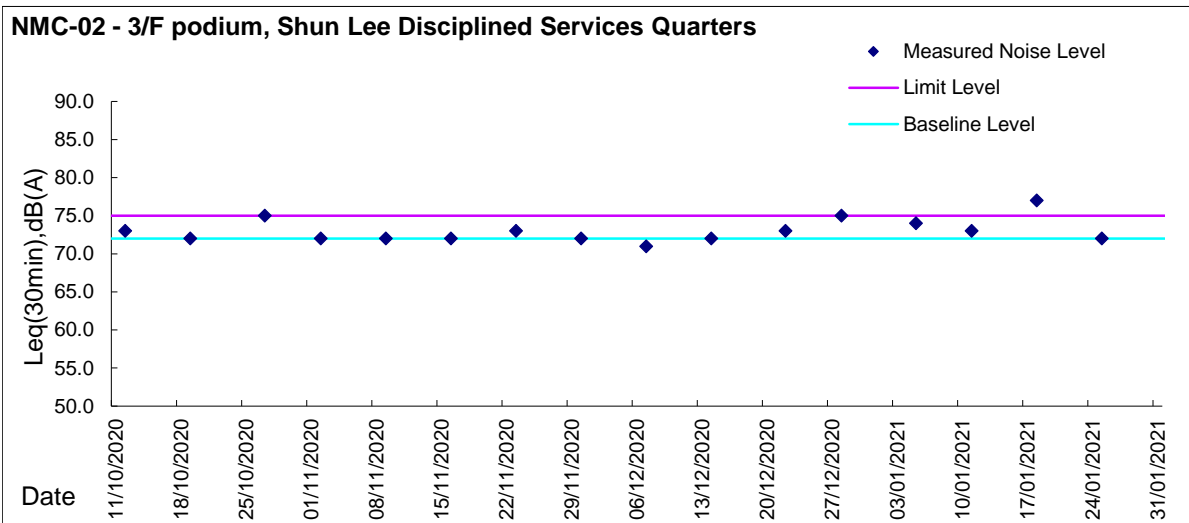
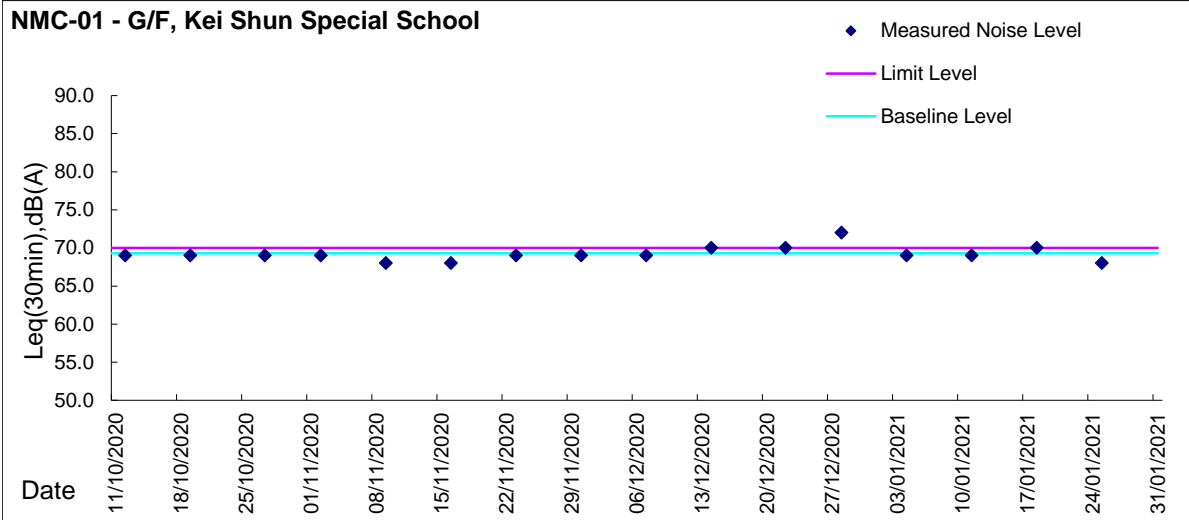
Date	Weather	Time	Measurement Noise Level			Average Noise Level	Baseline Level	Construction Noise Level	Limit Level
			Leq	L10	L90	Leq	Leq	Leq	Leq
			Unit: dB(A), (5-min)			Unit: dB(A), (30-min)			
4 Jan 2021	Fine	14:03	67.2	70.9	61.0	65	61.8	63	75
		14:08	65.1	67.6	60.7				
		14:13	64.7	67.2	60.9				
		14:18	66.0	69.5	61.0				
		14:23	63.4	65.1	59.8				
		14:28	65.1	67.5	61.5				
7 Jan 2021	Fine	14:27	71.6	73.0	68.0	70	61.8	70	75
		14:32	70.6	71.9	68.2				
		14:37	69.0	69.8	67.8				
		14:42	70.1	70.7	68.1				
		14:47	70.9	73.1	68.1				
		14:52	69.2	69.4	66.9				
11 Jan 2021	Fine	13:34	62.0	64.1	58.3	65	61.8	62	75
		13:39	62.7	64.9	59.7				
		13:44	62.7	64.5	59.9				
		13:49	64.1	64.7	60.4				
		13:54	69.8	73.3	60.9				
		13:59	63.6	64.6	60.6				
14 Jan 2021	Fine	13:56	75.2	77.9	70.2	74	61.8	74	75
		14:01	77.1	78.1	75.7				
		14:06	72.6	77.0	69.3				
		14:11	75.3	78.6	69.0				
		14:16	69.1	70.0	66.2				
		14:21	67.9	69.0	68.5				
18 Jan 2021	Fine	09:57	76.5	77.6	75.4	71	61.8	70	75
		10:02	73.2	76.5	65.0				
		10:07	63.5	64.5	59.5				
		10:12	61.2	63.0	58.5				
		10:17	61.1	62.8	58.5				
		10:22	61.7	63.5	59.0				
21 Jan 2021	Fine	14:54	80.1	82.7	71.1	74	61.8	74	75
		14:59	71.2	73.7	68.0				
		15:04	70.4	72.2	67.5				
		15:09	69.8	71.9	66.6				
		15:14	69.0	70.4	67.2				
		15:19	68.8	70.9	66.5				
25 Jan 2021	Fine	10:36	64.3	64.8	58.8	65	61.8	62	75
		10:41	63.8	64.9	58.7				
		10:46	64.0	66.0	59.7				
		10:51	65.0	66.8	59.7				
		10:56	63.9	64.0	58.1				
		11:01	67.3	71.8	59.9				
28 Jan 2021	Fine	13:55	71.4	76.0	68.3	72	61.8	71	75
		14:00	72.7	76.6	68.4				
		14:05	72.5	76.5	68.2				
		14:10	72.1	75.9	68.5				
		14:15	71.4	76.8	66.0				
		14:20	67.5	68.8	65.9				

\* Noise monitoring were measured at 34/F, Roof top of Block B on 7, 14, 21 and 28 January 2021



**Graphic Presentation of Noise Monitoring Result**

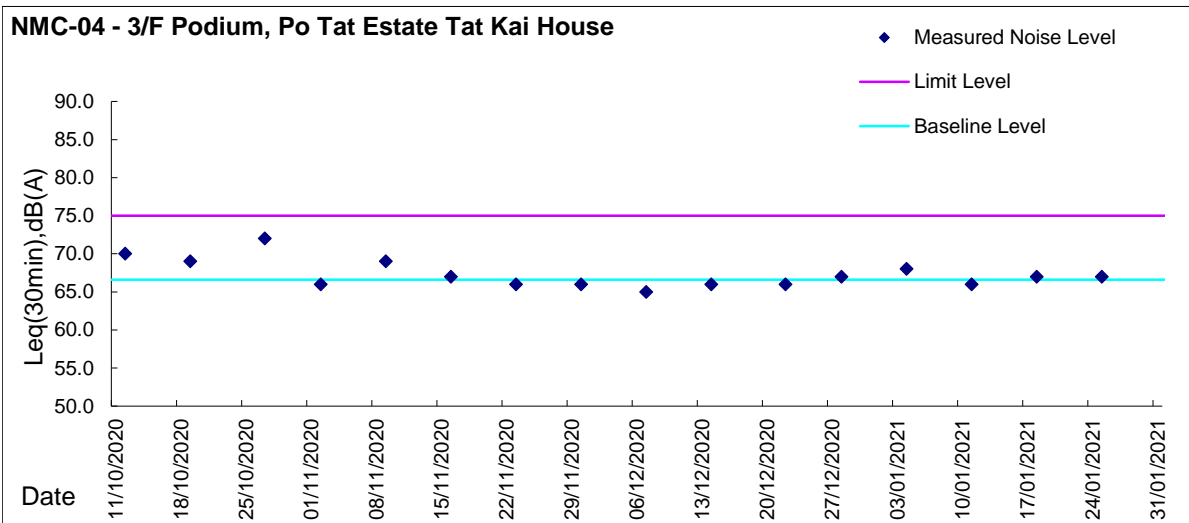
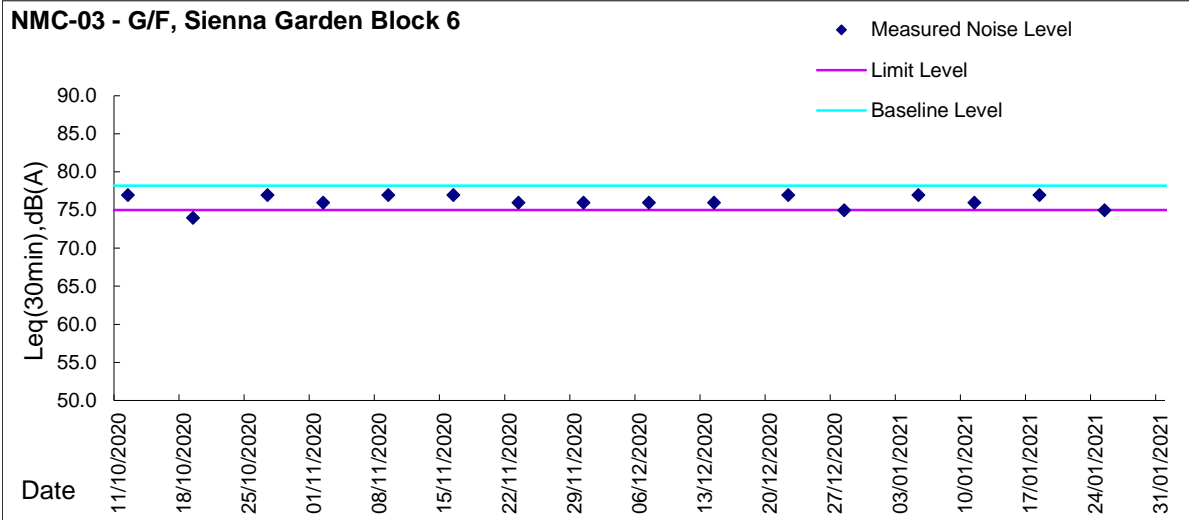
**Day Time (0700 - 1900hrs on normal weekdays)**





Graphic Presentation of Noise Monitoring Result

Day Time (0700 - 1900hrs on normal weekdays)





Graphic Presentation of Noise Monitoring Result

Day Time (0700 - 1900hrs on normal weekdays)

