



Noise Monitoring Result

Day Time (0700 - 1900hrs on normal weekdays)

Location: NMC-01 - G/F, Kei Shun Special School

Date	Weather	Time	Measurement Noise Level			Average Noise Level	Baseline Level	Construction Noise Level	Limit Level
			Leq	L10	L90	Leq	Leq	Leq	Leq
			Unit: dB(A), (5-min)			Unit: dB(A), (30-min)			
1 Feb 2021	Fine	13:11	68.5	70.9	64.6	68	69.3	<Baseline Level	70
		13:16	67.6	69.7	62.4				
		13:21	68.2	70.3	64.4				
		13:26	68.1	70.4	64.5				
		13:31	67.8	70.2	64.6				
		13:36	68.2	70.6	63.8				
8 Feb 2021	Fine	13:54	68.4	71.0	64.1	69	69.3	<Baseline Level	70
		13:59	68.1	70.3	65.1				
		14:04	69.1	71.3	65.8				
		14:09	68.4	71.2	63.7				
		14:14	69.8	72.3	65.5				
		14:19	68.9	71.1	64.5				
16 Feb 2021	Fine	13:04	68.5	70.5	63.7	68	69.3	<Baseline Level	70
		13:09	67.4	70.0	61.5				
		13:14	69.0	71.2	64.6				
		13:19	67.8	70.5	62.7				
		13:24	68.6	71.0	63.8				
		13:29	69.0	71.0	64.7				
23 Feb 2021	Fine	10:05	68.0	70.5	64.0	68	69.3	<Baseline Level	70
		10:10	68.3	71.0	64.0				
		10:15	68.5	71.2	64.3				
		10:20	68.5	71.2	64.5				
		10:25	68.4	71.3	64.3				
		10:30	68.1	71.0	64.5				



Noise Monitoring Result

Day Time (0700 - 1900hrs on normal weekdays)

Location: NMC-02 - 3/F podium, Shun Lee Disciplined Services Quarters Block 6

Date	Weather	Time	Measurement Noise Level			Average Noise Level	Baseline Level	Construction Noise Level	Limit Level
			Leq	L10	L90	Leq	Leq	Leq	Leq
			Unit: dB(A), (5-min)			Unit: dB(A), (30-min)			
1 Feb 2021	Fine	13:57	70.7	72.9	64.6	69	72.0	<Baseline Level	75
		14:02	67.6	69.7	62.4				
		14:07	68.2	70.3	64.4				
		14:12	68.1	70.4	64.5				
		14:17	67.8	70.2	64.6				
8 Feb 2021	Fine	14:22	68.2	70.6	63.8	73	72.0	65	75
		13:09	73.4	75.8	69.4				
		13:14	74.0	76.1	69.3				
		13:19	72.5	75.3	66.6				
		13:24	72.3	74.5	68.0				
16 Feb 2021	Fine	13:29	72.4	74.8	67.8	68	72.0	<Baseline Level	75
		13:48	68.5	70.5	63.7				
		13:53	67.4	70.0	61.5				
		14:03	67.8	70.5	62.7				
		14:08	68.6	71.0	63.8				
23 Feb 2021	Fine	14:13	69.0	71.0	64.7	72	72.0		75
		14:00	71.2	73.7	66.1				
		14:05	71.5	73.5	68.0				
		14:10	72.2	75.6	66.5				
		14:15	72.2	74.8	67.8				
		14:20	71.9	74.4	67.7				
		14:25	71.7	74.6	66.6				



Noise Monitoring Result

Day Time (0700 - 1900hrs on normal weekdays)

Location: NMC-03 - G/F, Sienna Garden Block 6

Date	Weather	Time	Measurement Noise Level			Average Noise Level	Baseline Level	Construction Noise Level	Limit Level
			Leq	L10	L90	Leq	Leq	Leq	Leq
			Unit: dB(A), (5-min)			Unit: dB(A), (30-min)			
1 Feb 2021	Fine	14:58	78.1	80.7	63.2	77	78.2	<Baseline Level	75
		15:03	77.6	80.7	62.1				
		15:08	74.4	78.7	60.9				
		15:13	74.6	78.3	63.5				
		15:18	76.5	80.7	65.4				
		15:23	78.1	80.8	67.4				
8 Feb 2021	Fine	14:54	76.8	79.8	66.3	77	78.2	<Baseline Level	75
		14:59	76.4	79.9	64.5				
		15:04	74.6	78.8	63.4				
		15:09	76.7	79.6	66.2				
		15:14	77.9	80.1	64.4				
		15:19	76.4	80.0	62.4				
16 Feb 2021	Fine	14:53	74.9	78.2	60.2	75	78.2	<Baseline Level	75
		14:58	76.2	78.7	62.9				
		15:03	74.7	78.2	65.3				
		15:08	73.3	77.4	60.4				
		15:13	76.0	79.5	67.1				
		15:18	73.0	77.0	65.3				
23 Feb 2021	Fine	09:15	76.5	79.5	66.5	76	78.2	<Baseline Level	75
		09:20	76.6	79.5	66.4				
		09:25	76.1	79.0	66.0				
		09:30	76.0	78.7	65.9				
		09:35	75.5	78.0	65.0				
		09:40	75.3	78.0	64.9				



Noise Monitoring Result

Day Time (0700 - 1900hrs on normal weekdays)

Location: NMC-04 - 3/F Podium, Po Tat Estate Tat Kai House

Date	Weather	Time	Measurement Noise Level			Average Noise Level	Baseline Level	Construction Noise Level	Limit Level
			Leq	L10	L90	Leq	Leq	Leq	Leq
			Unit: dB(A), (5-min)			Unit: dB(A), (30-min)			
1 Feb 2021	Fine	11:08	66.9	68.2	64.7	66	66.6	<Baseline Level	75
		11:13	66.8	68.2	64.5				
		11:18	66.7	68.0	64.8				
		11:23	66.4	67.8	64.2				
		11:28	65.0	67.1	62.6				
		11:33	63.6	64.9	61.9				
8 Feb 2021	Fine	10:35	66.3	67.5	64.8	66	66.6	<Baseline Level	75
		10:40	66.3	67.8	64.4				
		10:45	67.2	68.8	65.0				
		10:50	66.5	68.2	64.5				
		10:55	65.7	67.1	63.8				
		11:00	64.9	66.2	63.1				
16 Feb 2021	Fine	10:49	62.8	63.7	61.4	63	66.6	<Baseline Level	75
		10:54	63.4	64.3	62.1				
		10:59	63.4	64.3	61.8				
		11:04	63.8	65.0	62.1				
		11:09	63.1	64.5	61.1				
		11:14	63.4	64.7	61.9				
23 Feb 2021	Fine	11:10	64.5	66.0	62.5	65	66.6		75
		11:15	64.2	66.2	62.5				
		11:20	65.0	66.1	62.5				
		11:25	64.5	66.5	62.6				
		11:30	64.6	66.4	62.4				
		11:35	64.8	66.5	62.6				



Noise Monitoring Result

Day Time (0700 - 1900hrs on normal weekdays)

Location: NMC-05 - G/F, Hong Wah Court Block B Yee Hong House

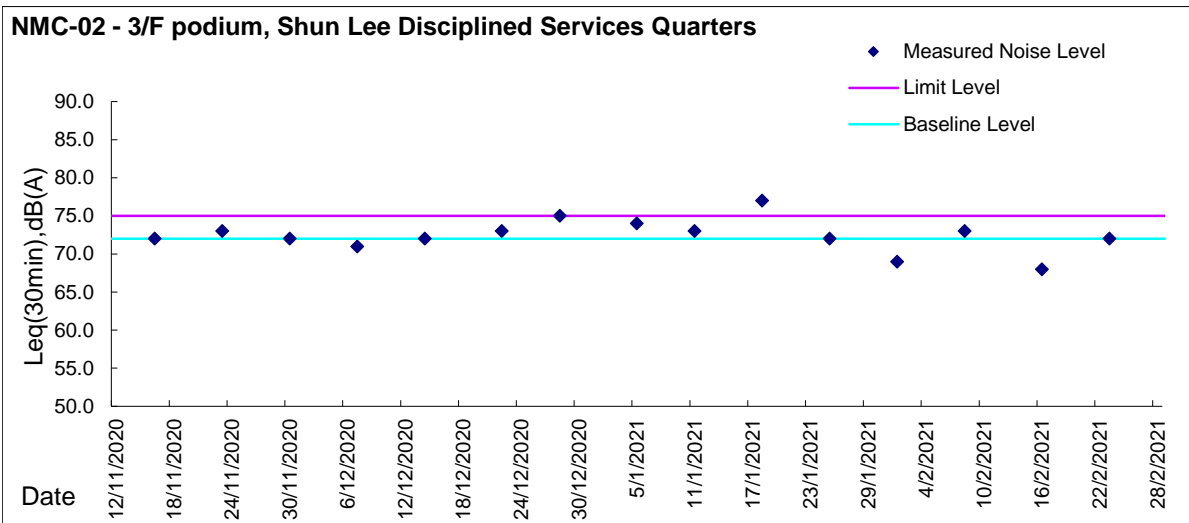
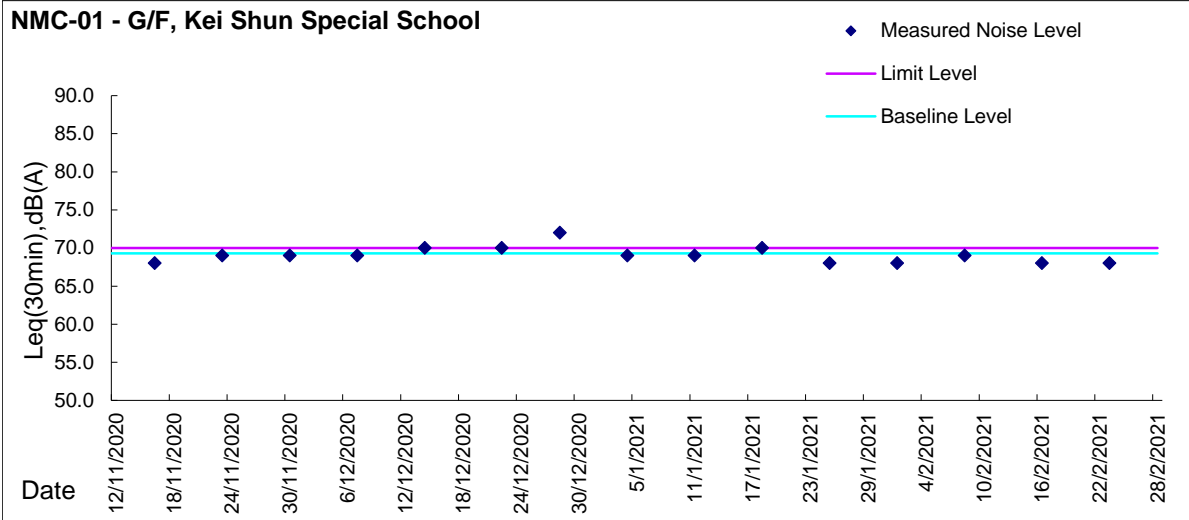
Date	Weather	Time	Measurement Noise Level			Average Noise Level	Baseline Level	Construction Noise Level	Limit Level
			Leq	L10	L90	Leq	Leq	Leq	Leq
			Unit: dB(A), (5-min)			Unit: dB(A), (30-min)			
1 Feb 2021	Fine	10:09	74.1	75.9	68.2	69	61.8	68	75
		10:14	71.9	75.3	60.3				
		10:19	64.0	65.7	59.3				
		10:24	64.0	64.4	59.9				
		10:29	63.2	65.1	59.4				
		10:34	62.7	64.8	59.8				
4 Feb 2021	Fine	13:52	68.0	69.3	66.5	69	61.8	67	75
		13:57	67.7	69.0	65.8				
		14:02	68.1	69.4	66.2				
		14:07	68.4	69.7	66.6				
		14:12	69.6	69.7	65.9				
		14:17	69.0	71.1	66.0				
6 Feb 2021	Fine	11:17	73.4	77.6	66.8	69	61.8	68	75
		11:22	72.5	78.0	65.7				
		11:27	64.0	65.5	62.0				
		11:32	63.5	64.7	61.6				
		11:37	62.8	64.3	61.1				
		11:42	63.3	64.8	61.3				
8 Feb 2021	Fine	09:43	64.7	66.3	62.8	65	61.8	62	75
		09:48	64.5	66.0	62.8				
		09:53	64.8	66.0	62.9				
		09:58	65.1	66.7	63.2				
		10:03	65.2	66.4	62.7				
		10:08	64.1	65.1	62.6				
9 Feb 2021	Fine	17:15	70.8	73.7	68.1	68	61.8	67	75
		17:20	67.6	68.8	65.9				
		17:25	68.1	69.8	66.2				
		17:30	67.3	68.6	65.6				
		17:35	67.4	68.2	65.6				
		17:40	66.4	67.5	64.9				
16 Feb 2021	Fine	09:54	61.1	62.8	58.2	61	61.8	<Baseline Level	75
		09:59	60.7	62.9	57.3				
		10:04	61.2	63.4	57.8				
		10:09	61.4	63.0	58.6				
		10:14	61.3	63.2	58.4				
		10:19	61.0	62.5	58.3				
17 Feb 2021	Fine	14:26	63.8	66.2	58.3	66	61.8	63	75
		14:31	63.2	65.4	59.6				
		14:36	63.9	66.8	59.9				
		14:41	68.0	71.8	61.8				
		14:46	68.6	71.7	59.5				
		14:51	62.4	64.6	58.8				
18 Feb 2021	Fine	14:00	67.4	68.9	65.8	69	61.8	68	75
		14:05	69.3	70.9	66.4				
		14:10	68.7	70.6	66.2				
		14:15	70.0	71.6	67.0				
		14:20	68.0	69.7	65.7				
		14:25	67.4	68.6	65.8				
22 Feb 2021	Fine	10:55	67.7	71.6	59.3	68	61.8	68	75
		11:00	66.7	70.1	66.7				
		11:05	68.0	71.0	60.6				
		11:10	67.3	70.6	67.2				
		11:15	66.4	70.6	60.8				
		11:20	70.1	72.4	61.2				
25 Feb 2021	Fine	14:23	72.5	74.8	69.7	70	61.8	69	75
		14:28	73.1	77.5	66.4				
		14:33	67.6	69.0	65.5				
		14:38	67.6	68.7	66.4				
		14:43	66.9	68.2	65.5				
		14:48	67.8	69.2	66.3				

* Noise monitoring conducted on 04, 09, 18 and 25 were measured at 34/F, Roof top of Block B



Graphic Presentation of Noise Monitoring Result

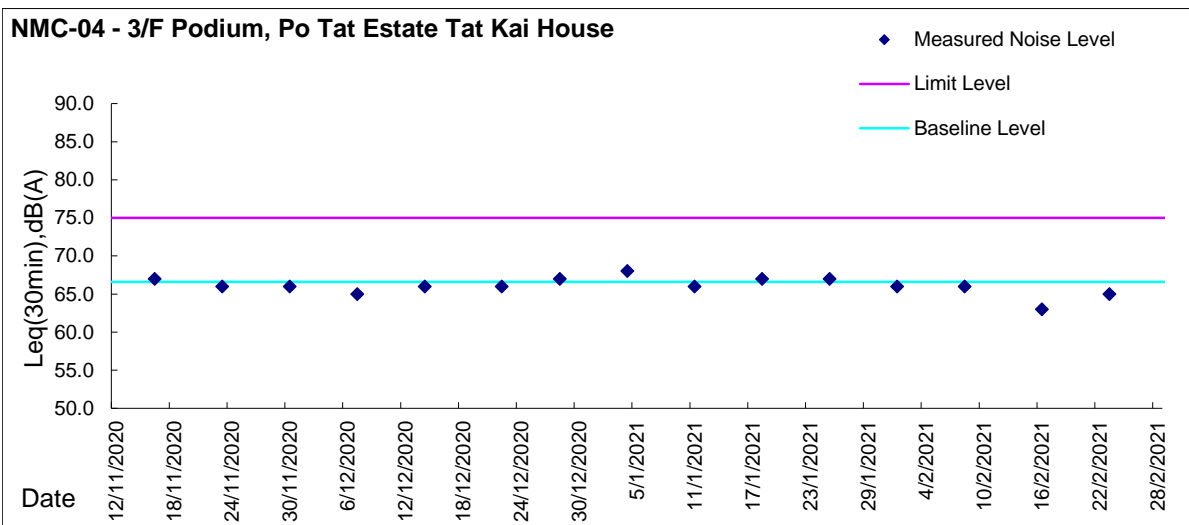
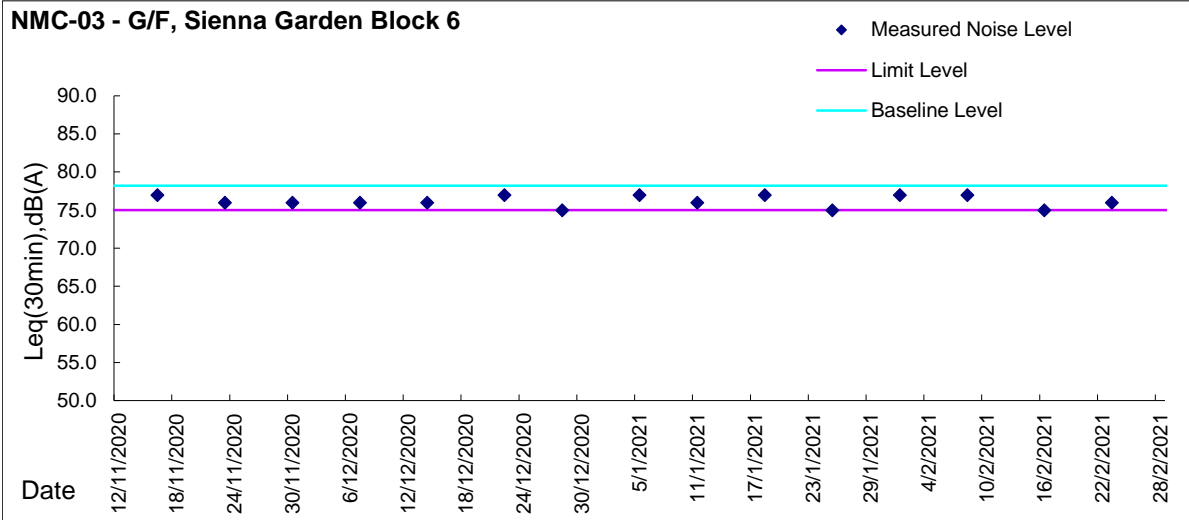
Day Time (0700 - 1900hrs on normal weekdays)





Graphic Presentation of Noise Monitoring Result

Day Time (0700 - 1900hrs on normal weekdays)





Graphic Presentation of Noise Monitoring Result

Day Time (0700 - 1900hrs on normal weekdays)

