



**Noise Monitoring Result**

**Day Time (0700 - 1900hrs on normal weekdays)**

Location: NMC-01 - G/F, Kei Shun Special School

Date	Weather	Time	Measurement Noise Level			Average Noise Level	Baseline Level	Construction Noise Level	Limit Level
			Leq	L10	L90	Leq	Leq	Leq	Leq
			Unit: dB(A), (5-min)			Unit: dB(A), (30-min)			
4 May 2020	Sunny	10:00	68.6	70.9	64.9	68	69.3	<Baseline Level	70
		10:05	68.6	70.5	65.4				
		10:10	68.5	71.1	63.9				
		10:15	68.2	70.2	64.3				
		10:20	68.6	70.5	65.4				
		10:25	68.0	70.1	64.5				
11 May 2020	Sunny	10:00	68.1	70.3	64.6	68	69.3	<Baseline Level	70
		10:05	68.4	70.5	64.6				
		10:10	68.4	70.4	64.4				
		10:15	68.6	70.5	65.7				
		10:20	68.2	70.6	63.8				
		10:25	68.7	71.0	64.3				
18 May 2020	Cloudy	11:29	69.1	70.8	66.3	69	69.3	<Baseline Level	70
		11:34	69.2	71.9	65.2				
		11:39	68.8	71.2	64.5				
		11:44	68.3	71.1	63.6				
		11:49	68.1	70.1	64.9				
		11:54	69.2	71.4	65.5				
25 May 2020	Cloudy	10:03	68.3	70.1	64.4	69	69.3	<Baseline Level	70
		10:08	68.9	71.4	64.0				
		10:13	69.5	72.0	65.8				
		10:18	69.5	71.8	66.1				
		10:23	69.5	71.5	65.9				
		10:28	69.2	71.8	64.3				



**Noise Monitoring Result**

**Day Time (0700 - 1900hrs on normal weekdays)**

Location: NMC-02 - 3/F podium, Shun Lee Disciplined Services Quarters Block 6

Date	Weather	Time	Measurement Noise Level			Average Noise Level	Baseline Level	Construction Noise Level	Limit Level
			Leq	L10	L90	Leq	Leq	Leq	Leq
			Unit: dB(A), (5-min)			Unit: dB(A), (30-min)			
4 May 2020	Sunny	09:08	71.8	74.2	66.9	72	72.0	<Baseline Level	75
		09:13	72.6	75.0	68.3				
		09:18	71.0	73.0	67.6				
		09:23	72.2	74.2	68.7				
		09:28	70.7	73.1	66.9				
		09:33	70.5	72.6	67.2				
11 May 2020	Sunny	09:15	73.7	76.1	70.5	73	72.0	65	75
		09:20	72.8	75.3	68.7				
		09:25	72.2	74.9	67.9				
		09:30	73.0	75.5	67.7				
		09:35	71.9	73.8	67.8				
		09:40	72.6	74.3	68.9				
18 May 2020	Cloudy	09:33	73.1	75.4	69.5	73	72.0	65	75
		09:38	72.6	74.1	70.1				
		09:43	72.1	74.0	68.3				
		09:48	73.2	75.5	68.8				
		09:53	73.1	75.2	69.2				
		09:58	72.2	74.4	67.7				
25 May 2020	Cloudy	09:17	72.1	74.4	67.3	72	72.0	<Baseline Level	75
		09:22	71.6	73.8	67.0				
		09:27	71.3	73.4	66.2				
		09:32	72.6	75.3	68.5				
		09:37	72.3	74.7	68.4				
		09:42	71.2	73.8	65.7				



**Noise Monitoring Result**

**Day Time (0700 - 1900hrs on normal weekdays)**

Location: NMC-03 - G/F, Sienna Garden Block 6

Date	Weather	Time	Measurement Noise Level			Average Noise Level	Baseline Level	Construction Noise Level	Limit Level			
			Leq	L10	L90					Leq	Leq	Leq
			Unit: dB(A), (5-min)							Unit: dB(A), (30-min)		
4 May 2020	Sunny	11:09	77.8	80.8	59.0	76	78.2	<Baseline Level	75			
		11:14	77.3	80.4	71.2							
		11:19	75.5	78.9	59.0							
		11:24	76.0	79.7	60.9							
		11:29	73.7	78.5	59.7							
		11:34	75.8	80.2	63.0							
11 May 2020	Sunny	11:07	76.0	79.6	60.9	76	78.2	<Baseline Level	75			
		11:12	77.3	81.1	61.4							
		11:17	73.9	78.1	63.6							
		11:22	72.8	76.7	62.2							
		11:27	77.0	80.4	68.1							
		11:32	75.9	79.3	64.9							
18 May 2020	Cloudy	13:17	75.2	78.6	61.8	75	78.2	<Baseline Level	75			
		13:22	73.9	78.0	62.7							
		13:27	75.0	79.2	63.3							
		13:32	75.4	78.8	62.9							
		13:37	73.8	77.4	60.3							
		13:42	75.5	78.9	62.7							
26 May 2020	Cloudy	13:26	76.3	79.6	61.4	75	78.2	<Baseline Level	75			
		13:31	74.5	78.4	60.2							
		13:36	74.4	78.9	62.5							
		13:41	76.1	80.1	59.7							
		13:46	76.5	80.2	66.0							
		13:51	74.5	78.8	60.4							



**Noise Monitoring Result**

**Day Time (0700 - 1900hrs on normal weekdays)**

Location: NMC-04 - 3/F Podium, Po Tat Estate Tat Kai House

Date	Weather	Time	Measurement Noise Level			Average Noise Level	Baseline Level	Construction Noise Level	Limit Level			
			Leq	L10	L90					Leq	Leq	Leq
			Unit: dB(A), (5-min)							Unit: dB(A), (30-min)		
4 May 2020	Sunny	14:05	67.4	68.5	65.6	67	66.6	57	75			
		14:10	65.9	67.2	64.3							
		14:15	67.1	68.2	65.3							
		14:20	67.6	68.7	66.1							
		14:25	67.3	68.8	65.3							
		14:30	67.0	68.3	64.9							
11 May 2020	Sunny	13:17	66.0	67.1	63.8	66	66.6	<Baseline Level	75			
		13:22	65.7	67.0	63.9							
		13:27	66.2	67.1	63.4							
		13:32	66.2	67.3	64.9							
		13:37	66.2	67.2	65.0							
		13:42	65.9	66.7	64.7							
18 May 2020	Cloudy	15:02	63.2	64.4	61.3	66	66.6	<Baseline Level	75			
		15:07	63.4	64.8	61.6							
		15:12	67.7	70.2	64.6							
		15:17	66.3	68.4	62.2							
		15:22	66.5	68.6	61.4							
		15:27	64.5	65.8	61.4							
26 May 2020	Cloudy	11:25	64.5	63.3	63.4	64	66.6	<Baseline Level	75			
		11:30	65.2	66.0	64.0							
		11:35	64.4	65.2	64.0							
		11:40	64.1	64.7	63.2							
		11:45	63.5	64.4	62.3							
		11:50	63.9	64.7	62.5							



**Noise Monitoring Result**

**Day Time (0700 - 1900hrs on normal weekdays)**

Location: NMC-05 - G/F, Hong Wah Court Block B Yee Hong House

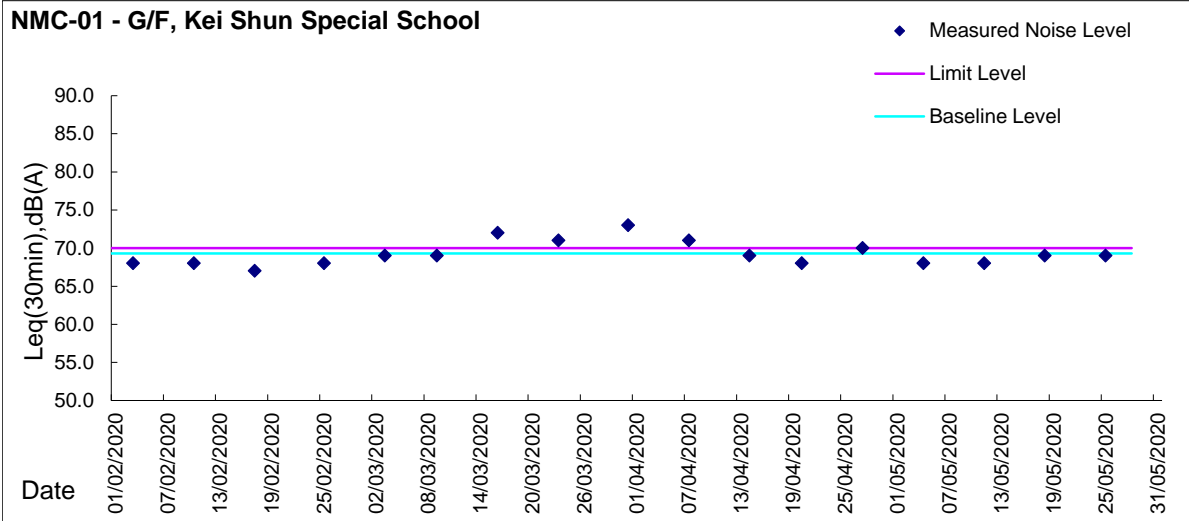
Date	Weather	Time	Measurement Noise Level			Average Noise Level	Baseline Level	Construction Noise Level	Limit Level			
			Leq	L10	L90					Leq	Leq	Leq
			Unit: dB(A), (5-min)							Unit: dB(A), (30-min)		
4 May 2020	Sunny	15:03	76.5	78.1	67.4	70	61.8	69	75			
		15:08	66.3	68.6	60.3							
		15:13	63.1	64.9	60.2							
		15:18	62.7	64.6	60.0							
		15:23	64.6	66.2	59.7							
6 May 2020	Fine	15:28	63.3	65.4	59.6	73	61.8	72	75			
		13:39	73.5	75.3	68.6							
		13:44	73.8	75.0	72.3							
		13:49	73.7	75.1	71.9							
		13:54	74.3	75.9	72.6							
11 May 2020	Sunny	13:59	70.8	74.4	63.2	69	61.8	69	75			
		14:04	63.4	65.1	60.6							
		14:15	71.1	71.7	70.2							
		14:20	71.0	71.6	69.8							
		14:25	71.6	72.6	70.0							
14 May 2020	Cloudy	14:30	66.1	67.5	59.9	72	61.8	71	75			
		14:35	65.3	67.9	59.3							
		14:40	66.3	69.7	60.3							
		09:36	64.7	66.1	62.4							
		09:41	69.3	72.8	64.9							
18 May 2020	Cloudy	09:46	74.1	76.0	67.8	67	61.8	66	75			
		09:51	73.7	75.7	73.8							
		09:56	71.8	74.7	66.4							
		10:01	70.7	73.0	66.5							
		14:08	66.4	69.0	62.4							
20 May 2020	Cloudy	14:13	67.8	70.8	62.7	74	61.8	74	75			
		14:18	68.3	71.9	63.1							
		14:23	67.1	69.0	63.6							
		14:28	66.9	69.0	63.5							
		14:33	66.8	69.3	63.0							
25 May 2020	Cloudy	10:24	76.6	77.9	76.5	69	61.8	68	75			
		10:29	77.0	78.4	75.5							
		10:34	75.7	77.2	70.2							
		10:39	69.6	72.7	64.3							
		10:44	69.1	71.9	64.2							
28 May 2020	Cloudy	10:49	69.2	72.1	64.1	78	61.8	78	75			
		16:26	64.0	65.5	60.6							
		16:31	64.1	66.5	59.5							
		16:36	65.7	68.2	60.9							
		16:41	63.3	65.6	59.4							
28 May 2020	Cloudy	16:46	63.3	64.9	60.7	78	61.8	78	75			
		16:51	75.7	79.9	63.8							
		10:39	72.3	76.2	62.2							
		10:44	70.3	73.7	61.3							
		10:49	79.7	82.3	66.3							
28 May 2020	Cloudy	10:54	79.0	82.8	62.3	78	61.8	78	75			
		10:59	78.8	82.5	62.6							
		11:04	81.6	84.0	61.9							



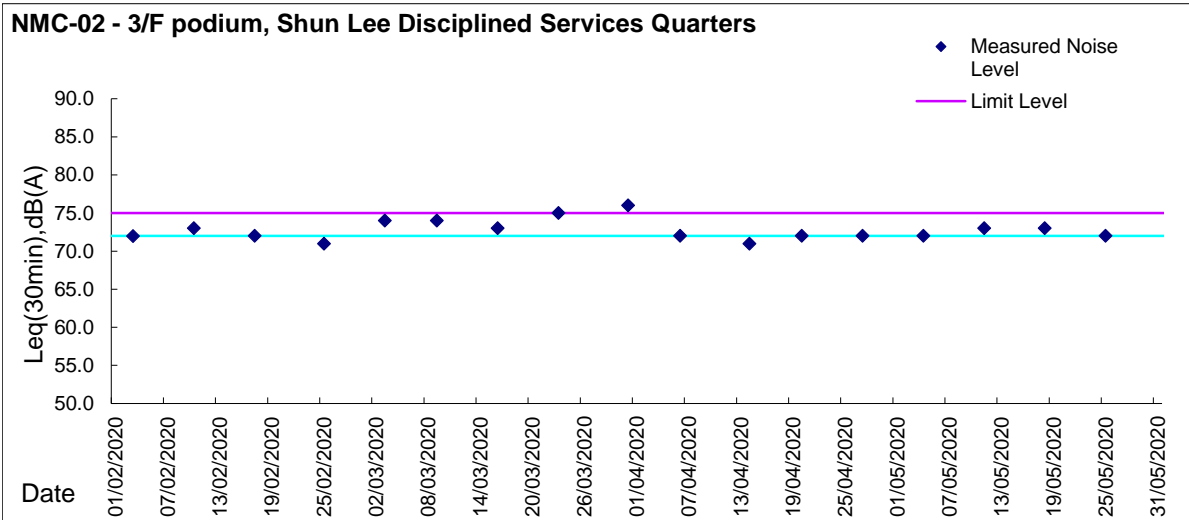
Graphic Presentation of Noise Monitoring Result

Day Time (0700 - 1900hrs on normal weekdays)

NMC-01 - G/F, Kei Shun Special School



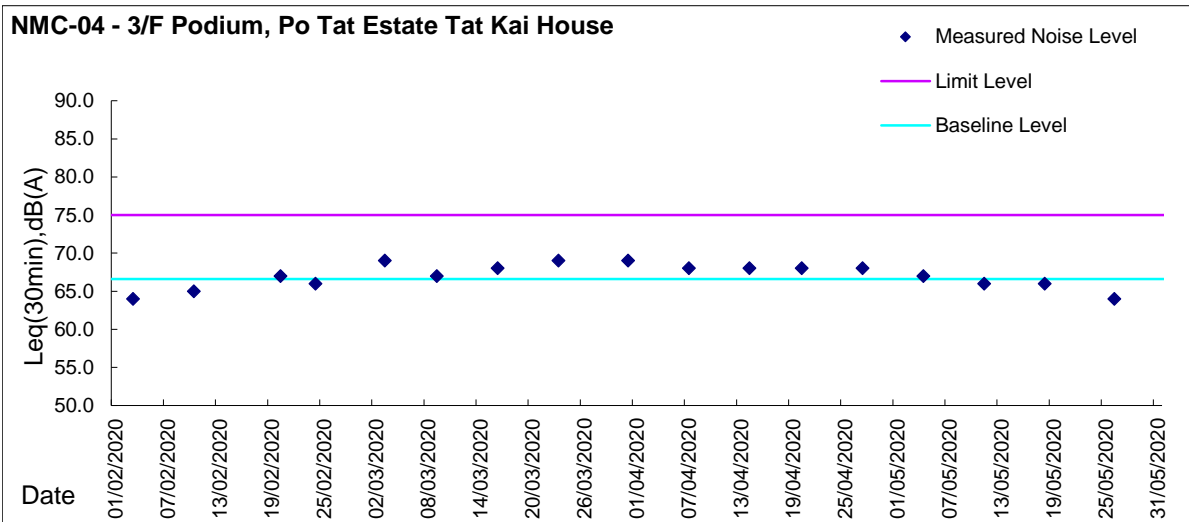
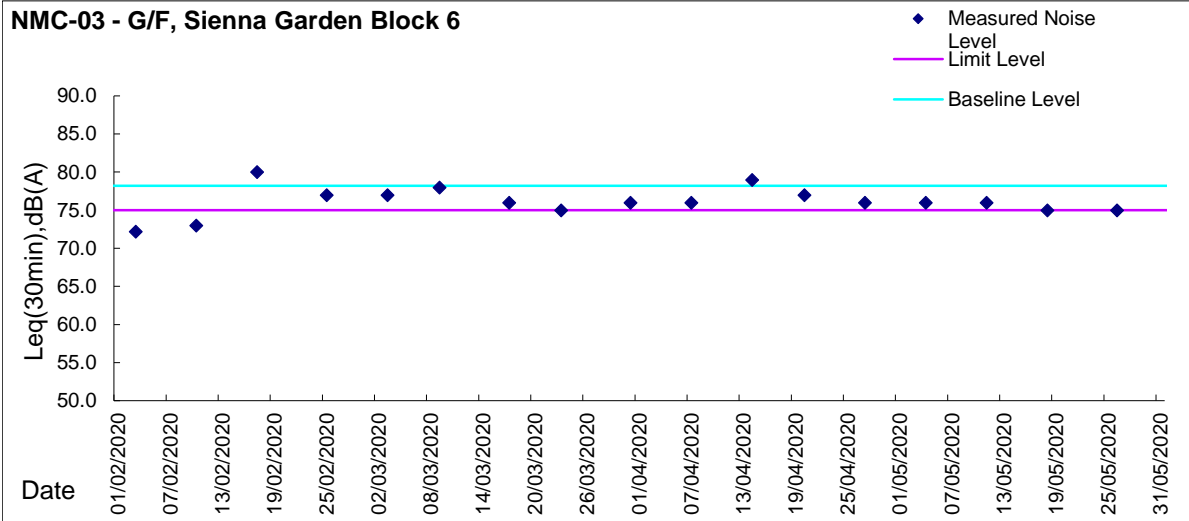
NMC-02 - 3/F podium, Shun Lee Disciplined Services Quarters





Graphic Presentation of Noise Monitoring Result

Day Time (0700 - 1900hrs on normal weekdays)





Graphic Presentation of Noise Monitoring Result

Day Time (0700 - 1900hrs on normal weekdays)

