



**Noise Monitoring Result**

**Day Time (0700 - 1900hrs on normal weekdays)**

Location: NMC-01 - G/F, Kei Shun Special School

Date	Weather	Time	Measurement Noise Level			Average Noise Level	Baseline Level	Construction Noise Level	Limit Level			
			Leq	L10	L90					Leq	Leq	Leq
			Unit: dB(A), (5-min)							Unit: dB(A), (30-min)		
1 Jun 2020	Fine	10:01	69.0	71.1	65.8	69	69.3	<Baseline Level	70			
		10:06	68.9	70.8	65.6							
		10:11	69.6	71.7	66.4							
		10:16	68.1	70.6	63.5							
		10:21	69.4	71.5	66.0							
		10:26	68.3	70.8	64.2							
9 Jun 2020	Cloudy	13:35	63.8	70.6	65.0	68	69.3	<Baseline Level	70			
		13:40	69.3	72.6	66.4							
		13:45	67.9	70.2	64.6							
		13:50	66.4	69.7	63.5							
		13:55	67.2	70.5	63.3							
		14:00	68.6	71.4	64.9							
15 Jun 2020	Fine	13:10	69.8	71.9	67.0	73	69.3	70	70			
		13:15	69.2	71.5	65.1							
		13:20	68.7	71.0	65.2							
		13:25	77.3	80.4	69.5							
		13:30	73.6	75.4	69.3							
		13:35	70.7	72.5	68.5							
22 Jun 2020	Fine	10:49	74.0	79.8	65.2	73	69.3	70	70			
		10:54	69.1	71.2	64.8							
		10:59	71.4	75.7	64.4							
		11:04	69.1	70.9	65.9							
		11:09	69.2	71.2	65.6							
		11:14	76.4	80.5	66.2							
29 Jun 2020	Fine	13:11	68.3	70.8	63.9	69	69.3	56	70			
		13:16	68.8	71.1	64.8							
		13:21	70.8	72.7	68.8							
		13:26	70.6	72.7	67.9							
		13:31	69.2	71.1	64.4							
		13:36	68.6	70.5	65.3							



**Noise Monitoring Result**

**Day Time (0700 - 1900hrs on normal weekdays)**

Location: NMC-02 - 3/F podium, Shun Lee Disciplined Services Quarters Block 6

Date	Weather	Time	Measurement Noise Level			Average Noise Level	Baseline Level	Construction Noise Level	Limit Level			
			Leq	L10	L90					Leq	Leq	Leq
			Unit: dB(A), (5-min)							Unit: dB(A), (30-min)		
1 Jun 2020	Fine	09:16	72.2	74.3	68.2	72	72.0	62	75			
		09:21	72.9	75.3	67.9							
		09:26	71.4	73.8	67.7							
		09:31	72.6	74.8	69.3							
		09:36	72.3	74.9	68.1							
		09:41	72.7	75.4	69.0							
9 Jun 2020	Cloudy	13:15	71.7	74.3	67.4	71	72.0	<Baseline Level	75			
		13:20	70.9	73.5	66.1							
		13:25	71.5	74.4	66.5							
		13:30	70.5	73.3	67.0							
		13:35	72.0	74.5	67.3							
		13:40	71.4	73.6	67.8							
15 Jun 2020	Fine	10:33	72.9	74.9	69.9	72	72.0	60	75			
		10:38	71.4	73.3	68.3							
		10:43	71.9	74.9	66.7							
		10:48	72.0	74.2	69.0							
		10:53	70.9	73.6	66.5							
		10:58	73.8	75.4	70.7							
22 Jun 2020	Fine	10:01	71.9	74.3	66.8	73	72.0	64	75			
		10:06	74.7	76.4	67.9							
		10:11	71.0	73.9	65.3							
		10:16	72.8	75.0	68.8							
		10:21	72.7	75.0	68.0							
		10:26	71.9	74.5	67.3							
30 Jun 2020	Fine	14:30	71.8	74.8	67.4	73	72.0	64	75			
		14:35	74.1	78.2	68.5							
		14:40	73.4	78.1	66.4							
		14:45	70.8	72.8	65.2							
		14:50	72.2	75.2	67.1							
		14:55	72.9	75.9	66.2							



**Noise Monitoring Result**

**Day Time (0700 - 1900hrs on normal weekdays)**

Location: NMC-03 - G/F, Sienna Garden Block 6

Date	Weather	Time	Measurement Noise Level			Average Noise Level	Baseline Level	Construction Noise Level	Limit Level			
			Leq	L10	L90					Leq	Leq	Leq
			Unit: dB(A), (5-min)							Unit: dB(A), (30-min)		
1 Jun 2020	Fine	10:58	76.0	79.0	64.4	77	78.2	<Baseline Level	75			
		11:03	77.7	80.7	68.8							
		11:08	79.1	81.5	71.0							
		11:13	78.4	81.1	71.8							
		11:18	76.2	79.9	63.7							
		11:23	76.3	79.9	59.2							
9 Jun 2020	Cloudy	14:15	73.3	75.8	64.2	74	78.2	<Baseline Level	75			
		14:20	75.2	78.6	65.2							
		14:25	74.5	78.2	63.8							
		14:30	73.6	76.5	65.9							
		14:35	75.8	79.1	66.2							
		14:40	74.0	77.8	65.7							
16 Jun 2020	Fine	10:32	75.7	79.2	60.7	77	78.2	<Baseline Level	75			
		10:37	76.4	80.2	63.7							
		10:42	76.7	80.0	66.0							
		10:47	74.1	78.2	60.1							
		10:52	79.1	82.0	61.2							
		10:57	75.6	79.3	65.5							
22 Jun 2020	Fine	15:26	75.0	78.1	63.5	76	78.2	<Baseline Level	75			
		15:31	74.5	78.3	61.9							
		15:36	75.5	79.1	64.4							
		15:41	75.9	79.0	67.2							
		15:46	76.0	79.2	62.3							
		15:51	76.2	78.8	64.1							
29 Jun 2020	Fine	14:09	75.3	79.0	60.0	75	78.2	<Baseline Level	75			
		14:14	75.3	77.3	59.1							
		14:19	75.9	80.4	62.5							
		14:24	76.3	79.7	61.1							
		14:29	73.6	77.4	59.6							
		14:34	76.0	79.7	63.4							



**Noise Monitoring Result**

**Day Time (0700 - 1900hrs on normal weekdays)**

Location: NMC-04 - 3/F Podium, Po Tat Estate Tat Kai House

Date	Weather	Time	Measurement Noise Level			Average Noise Level	Baseline Level	Construction Noise Level	Limit Level			
			Leq	L10	L90					Leq	Leq	Leq
			Unit: dB(A), (5-min)							Unit: dB(A), (30-min)		
1 Jun 2020	Fine	13:22	64.8	66.3	63.2	65	66.6	<Baseline Level	75			
		13:27	64.5	65.4	63.3							
		13:32	64.1	64.8	63.0							
		13:37	64.1	65.0	62.9							
		13:42	64.6	65.4	63.6							
		13:47	65.4	66.6	64.0							
9 Jun 2020	Cloudy	11:25	64.8	65.7	63.5	64	66.6	<Baseline Level	75			
		11:30	64.6	65.4	63.2							
		11:35	64.5	65.8	62.5							
		11:40	63.3	64.2	62.0							
		11:45	63.5	64.1	61.2							
		11:50	63.0	63.9	61.2							
15 Jun 2020	Fine	14:01	67.2	69.0	64.1	67	66.6	<Baseline Level	75			
		14:06	67.1	68.7	63.8							
		14:11	66.6	68.4	63.8							
		14:16	67.6	69.4	63.8							
		14:21	65.4	66.5	63.5							
		14:26	64.9	66.3	63.4							
22 Jun 2020	Fine	13:08	65.8	67.2	64.1	66	66.6	<Baseline Level	75			
		13:13	65.3	66.6	62.7							
		13:18	65.2	66.5	63.5							
		13:23	66.3	67.7	64.5							
		13:28	67.7	69.5	65.4							
		13:33	67.5	68.9	65.7							
29 Jun 2020	Fine	11:09	67.7	69.9	63.6	67	66.6	57	75			
		11:14	68.8	71.3	63.8							
		11:19	67.3	69.3	63.4							
		11:24	67.9	69.8	64.8							
		11:29	64.2	65.2	62.9							
		11:34	64.8	65.9	63.4							



**Noise Monitoring Result**

**Day Time (0700 - 1900hrs on normal weekdays)**

Location: NMC-05 - G/F, Hong Wah Court Block B Yee Hong House

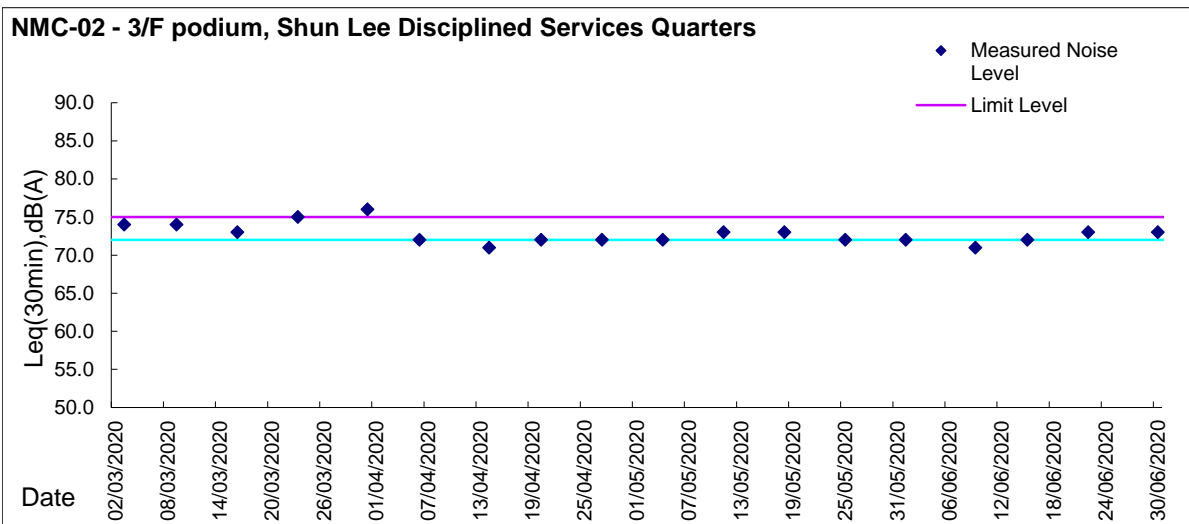
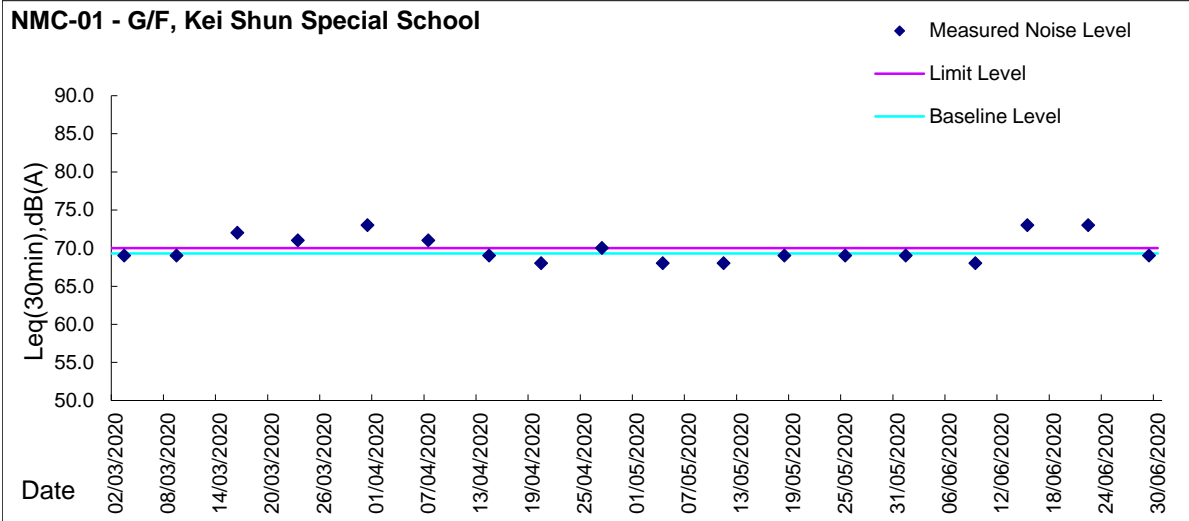
Date	Weather	Time	Measurement Noise Level			Average Noise Level	Baseline Level	Construction Noise Level	Limit Level
			Leq	L10	L90	Leq	Leq	Leq	Leq
			Unit: dB(A), (5-min)			Unit: dB(A), (30-min)			
1 Jun 2020	Fine	14:19	64.7	67.1	59.3	73	61.8	73	75
		14:24	63.9	65.8	60.7				
		14:29	66.0	67.2	61.6				
		14:34	78.2	80.8	62.4				
		14:39	76.6	79.8	62.2				
		14:44	66.7	70.0	59.4				
4 Jun 2020	Fine	10:29	79.5	84.8	64.7	75	61.8	75	75
		10:34	70.9	74.6	64.8				
		10:39	72.9	74.5	69.2				
		10:44	74.2	76.7	62.9				
		10:49	73.0	74.9	62.2				
		10:54	74.4	76.5	63.2				
9 Jun 2020	Cloudy	09:39	76.8	77.7	75.9	75	61.8	75	75
		09:44	76.3	78.0	68.9				
		09:49	68.0	68.3	64.4				
		09:54	73.2	77.2	66.3				
		09:59	76.1	77.9	69.0				
		10:04	77.3	80.1	68.1				
11 Jun 2020	Fine	15:48	80.5	83.0	67.0	80	61.8	80	75
		15:53	82.2	85.3	67.8				
		15:58	82.1	83.3	80.8				
		16:03	80.7	83.6	65.8				
		16:08	68.9	73.0	65.5				
		16:13	69.4	71.7	65.8				
15 Jun 2020	Fine	15:07	72.7	76.2	57.7	74	61.8	73	75
		15:12	73.4	77.2	60.7				
		15:17	73.7	77.0	63.0				
		15:22	71.1	75.2	57.1				
		15:27	76.1	79.0	58.2				
		15:32	72.6	76.3	62.5				
17 Jun 2020	Fine	14:27	70.1	72.2	65.9	69	61.8	68	75
		14:32	69.7	72.1	66.0				
		14:37	69.5	71.6	65.5				
		14:42	67.7	70.3	63.1				
		14:47	66.2	68.4	62.9				
		14:52	68.6	70.7	64.0				
22 Jun 2020	Fine	14:15	71.7	75.3	64.5	71	61.8	71	75
		14:20	72.6	73.9	67.6				
		14:25	71.4	73.2	66.0				
		14:30	70.5	73.2	65.6				
		14:35	71.1	72.8	66.4				
		14:40	70.9	72.6	65.8				
26 Jun 2020	Fine	13:33	70.9	71.8	68.6	70	61.8	70	75
		13:38	70.8	71.9	68.1				
		13:43	70.2	71.5	67.8				
		13:48	70.4	71.8	66.4				
		13:53	69.2	70.1	66.5				
		13:58	69.5	70.2	68.0				
29 Jun 2020	Fine	10:22	69.9	73.0	63.3	71	61.8	71	75
		10:27	72.3	72.9	71.5				
		10:32	72.1	72.7	71.4				
		10:37	72.6	73.2	71.7				
		10:42	72.0	73.5	64.5				
		10:47	66.6	69.3	62.6				

Remarks: Ad-hoc noise monitoring was conducted on 4, 11, 17 and 26 June 2020



**Graphic Presentation of Noise Monitoring Result**

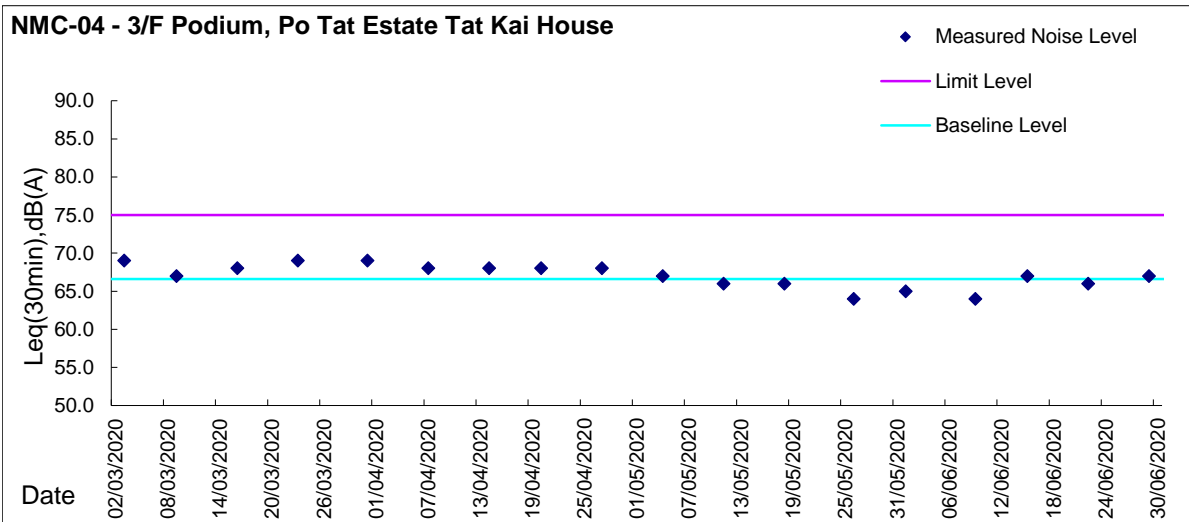
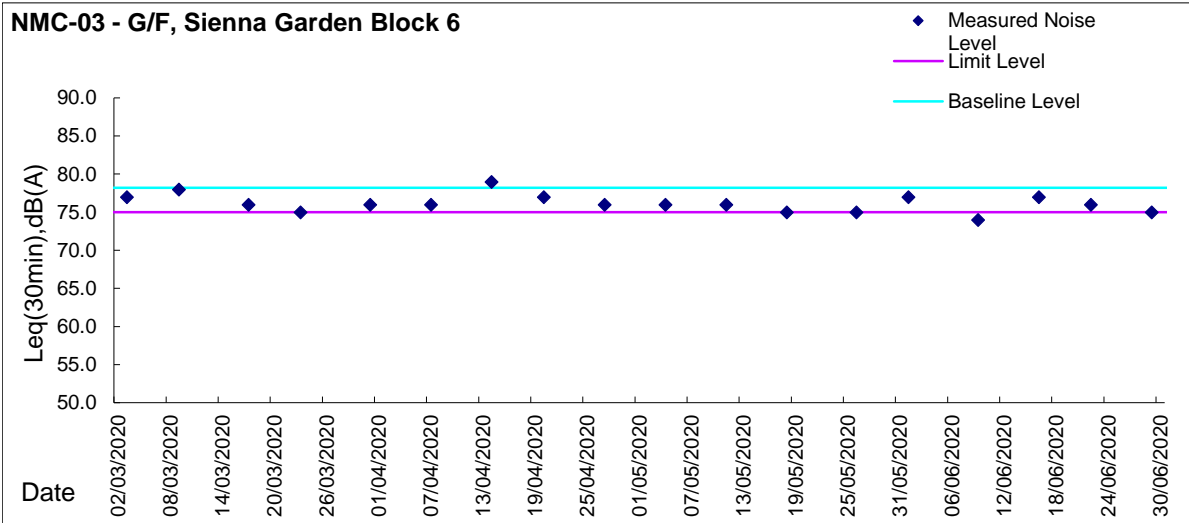
**Day Time (0700 - 1900hrs on normal weekdays)**





Graphic Presentation of Noise Monitoring Result

Day Time (0700 - 1900hrs on normal weekdays)





Graphic Presentation of Noise Monitoring Result

Day Time (0700 - 1900hrs on normal weekdays)

