



Noise Monitoring Result

Day Time (0700 - 1900hrs on normal weekdays)

Location: NMC-01 - G/F, Kei Shun Special School

Date	Weather	Time	Measurement Noise Level			Average Noise Level	Baseline Level	Construction Noise Level	Limit Level
			Leq	L10	L90	Leq	Leq	Leq	Leq
			Unit: dB(A), (5-min)			Unit: dB(A), (30-min)			
7 Jun 2021	Fine	14:59	69.5	72.0	64.7	70	69.3	62	70
		15:04	70.6	73.3	66.6				
		15:09	70.8	73.4	66.6				
		15:14	70.4	73.2	66.5				
		15:19	69.4	71.6	66.1				
	15:24	69.5	72.2	64.4					
15 Jun 2021	Cloudy	09:10	70.3	72.4	66.7	70	69.3	62	70
		09:15	70.6	72.4	68.2				
		09:20	70.0	71.9	67.2				
		09:25	69.9	72.2	66.2				
		09:30	68.9	70.8	65.1				
	09:35	70.5	72.6	67.4					
21 Jun 2021	Cloudy	09:50	70.6	72.8	67.2	70	69.3	64	70
		09:55	69.5	71.5	66.4				
		10:00	71.5	73.5	67.8				
		10:05	69.7	71.6	66.2				
		10:10	70.0	72.4	66.7				
	10:15	70.5	73.5	65.0					
29 Jun 2021	Cloudy	13:20	69.5	72.5	67.5	70	69.3	61	70
		13:25	69.6	72.6	67.5				
		13:30	70.3	72.8	67.8				
		13:35	70.0	72.5	67.5				
		13:40	70.2	72.9	67.6				
	13:45	69.8	72.5	67.4					



Noise Monitoring Result

Day Time (0700 - 1900hrs on normal weekdays)

Location: NMC-02 - 3/F podium, Shun Lee Disciplined Services Quarters Block 6

Date	Weather	Time	Measurement Noise Level			Average Noise Level	Baseline Level	Construction Noise Level	Limit Level
			Leq	L10	L90	Leq	Leq	Leq	Leq
			Unit: dB(A), (5-min)			Unit: dB(A), (30-min)			
7 Jun 2021	Fine	14:17	74.7	76.8	70.7	75	72.0	72	75
		14:22	75.5	78.1	70.8				
		14:27	72.9	75.6	68.7				
		14:32	74.7	77.4	69.8				
		14:37	75.6	78.3	69.1				
		14:42	76.4	78.7	72.9				
15 Jun 2021	Cloudy	10:15	72.2	74.5	68.5	73	72.0	66	75
		10:20	72.6	74.8	69.0				
		10:25	72.5	74.8	68.7				
		10:30	73.4	76.1	69.5				
		10:35	73.5	75.4	68.4				
		10:40	73.3	75.0	68.5				
21 Jun 2021	Cloudy	10:35	74.6	76.1	72.4	74	72.0	69	75
		10:40	73.8	75.8	72.1				
		10:45	73.7	75.9	72.0				
		10:50	73.2	75.5	71.5				
		10:55	73.0	74.2	71.2				
		11:00	73.2	74.5	71.6				
29 Jun 2021	Cloudy	14:15	72.1	74.4	68.7	72	72.0	60	75
		14:20	71.5	74.1	67.3				
		14:25	71.6	74.0	67.3				
		14:30	73.5	76.6	68.2				
		14:35	72.9	74.6	67.7				
		14:40	71.6	73.6	68.6				



Noise Monitoring Result

Day Time (0700 - 1900hrs on normal weekdays)

Location: NMC-03 - G/F, Sienna Garden Block 6

Date	Weather	Time	Measurement Noise Level			Average Noise Level	Baseline Level	Construction Noise Level	Limit Level
			Leq	L10	L90	Leq	Leq	Leq	Leq
			Unit: dB(A), (5-min)			Unit: dB(A), (30-min)			
7 Jun 2021	Fine	15:58	76.7	80.0	63.9	78	78.2	<Baseline Level	75
		16:03	75.6	79.8	64.8				
		16:08	80.1	80.7	65.5				
		16:13	78.5	80.7	65.2				
		16:18	76.7	80.1	64.3				
		16:23	78.1	81.5	65.8				
15 Jun 2021	Cloudy	08:05	75.3	79.0	62.2	78	78.2	65	75
		08:10	75.8	79.6	63.7				
		08:15	76.6	79.6	63.4				
		08:20	79.1	82.1	71.0				
		08:25	81.1	83.4	78.2				
		08:30	79.5	82.5	63.3				
21 Jun 2021	Cloudy	11:30	80.0	83.3	73.7	78	78.2	<Baseline Level	75
		11:35	76.3	80.4	67.9				
		11:40	78.5	82.4	68.9				
		11:45	78.7	82.4	73.8				
		11:50	76.5	78.1	73.9				
		11:55	76.8	79.5	65.7				
28 Jun 2021	Cloudy	15:25	74.8	78.9	63.0	77	78.2	<Baseline Level	75
		15:30	76.7	79.7	62.7				
		15:35	77.3	80.4	64.7				
		15:40	79.2	80.6	69.3				
		15:45	78.4	80.4	65.0				
		15:50	76.0	80.4	64.5				



Noise Monitoring Result

Day Time (0700 - 1900hrs on normal weekdays)

Location: NMC-04 - 3/F Podium, Po Tat Estate Tat Kai House

Date	Weather	Time	Measurement Noise Level			Average Noise Level	Baseline Level	Construction Noise Level	Limit Level
			Leq	L10	L90	Leq	Leq	Leq	Leq
			Unit: dB(A), (5-min)			Unit: dB(A), (30-min)			
7 Jun 2021	Fine	11:04	68.2	69.8	65.6	68	66.6	62	75
		11:09	68.5	70.8	64.8				
		11:14	68.2	70.1	65.7				
		11:19	68.0	70.0	63.8				
		11:24	67.7	69.7	64.6				
		11:29	67.2	69.5	62.7				
15 Jun 2021	Fine	11:10	67.5	68.9	63.5	67	66.6	59	75
		11:15	67.6	69.0	64.0				
		11:20	67.2	69.2	64.1				
		11:25	67.0	69.3	64.1				
		11:30	67.5	69.1	64.2				
		11:35	67.4	69.0	64.0				
21 Jun 2021	Fine	11:10	65.6	67.8	63.0	66	66.6	<Baseline Level	75
		11:15	66.0	67.5	62.8				
		11:20	66.2	67.3	62.5				
		11:25	66.1	68.0	62.5				
		11:30	65.9	67.6	62.7				
		11:35	66.0	67.8	63.0				
28 Jun 2021	Cloudy	13:20	64.3	65.2	61.5	65	66.6	<Baseline Level	75
		13:25	65.2	66.5	64.6				
		13:30	65.3	66.2	64.2				
		13:35	65.0	66.0	63.7				
		13:40	65.4	66.4	64.2				
		13:45	65.2	66.4	64.0				



Noise Monitoring Result

Day Time (0700 - 1900hrs on normal weekdays)

Location: NMC-05 - G/F, Hong Wah Court Block B Yee Hong House

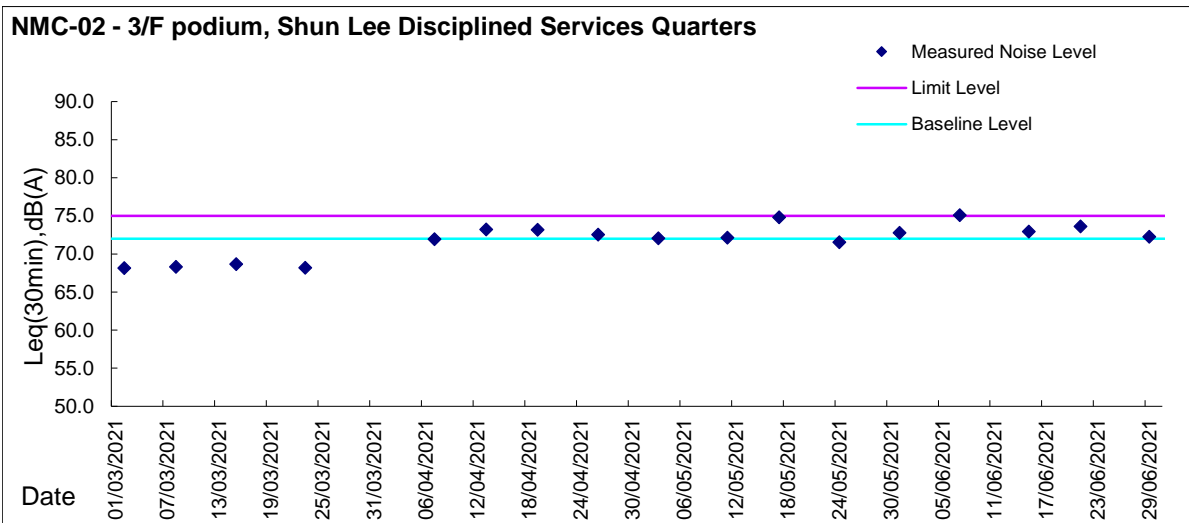
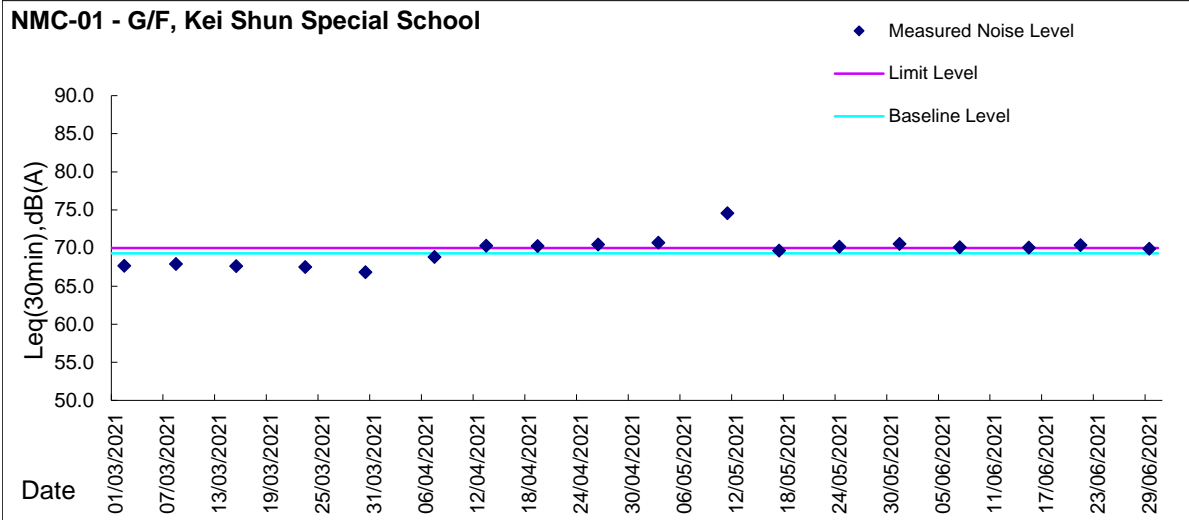
Date	Weather	Time	Measurement Noise Level			Average Noise Level	Baseline Level	Construction Noise Level	Limit Level
			Leq	L10	L90	Leq	Leq	Leq	Leq
			Unit: dB(A), (5-min)			Unit: dB(A), (30-min)			
3 Jun 2021	Fine	10:40	70.0	71.3	68.2	69	61.8	68	75
		10:45	69.1	70.5	67.1				
		10:50	69.3	70.9	67.7				
		10:55	69.1	70.5	67.5				
		11:00	69.0	70.4	67.3				
		11:05	69.0	70.4	67.2				
7 Jun 2021	Fine	09:59	80.9	82.1	79.9	81	61.8	81	75
		10:04	80.0	81.4	75.8				
		10:09	79.8	81.4	70.3				
		10:14	82.5	85.5	66.9				
		10:19	82.2	84.0	69.7				
		10:24	80.8	82.4	78.8				
8 Jun 2021	Fine	13:59	64.2	66.8	60.4	68	61.8	67	75
		14:04	63.3	65.8	60.5				
		14:09	63.7	65.8	60.2				
		14:14	66.9	70.0	60.8				
		14:19	70.8	71.9	69.2				
		14:24	71.5	73.4	68.6				
10 Jun 2021	Fine	14:20	67.6	68.7	66.0	68	61.8	67	75
		14:25	68.1	69.5	66.2				
		14:30	68.2	69.6	66.4				
		14:35	67.8	69.0	66.0				
		14:40	67.5	68.8	66.1				
		14:45	67.6	69.0	66.0				
15 Jun 2021	Fine	10:25	65.3	66.2	61.6	62	61.8	<Baseline Level	75
		10:30	62.4	63.8	60.0				
		10:35	62.9	64.8	59.8				
		10:40	61.7	63.6	59.2				
		10:45	62.5	63.5	59.2				
		10:50	61.8	63.0	59.0				
17 Jun 2021	Fine	10:40	68.4	69.8	66.5	69	61.8	68	75
		10:45	68.5	70.4	66.5				
		10:50	68.8	70.5	66.5				
		10:55	68.8	70.2	66.9				
		11:00	69.3	70.6	67.7				
		11:05	69.6	71.0	67.9				
21 Jun 2021	Fine	10:05	62.8	63.8	59.4	66	61.8	64	75
		10:10	61.7	63.2	59.6				
		10:15	69.2	70.2	61.6				
		10:20	64.0	66.0	60.4				
		10:25	66.4	67.8	61.4				
		10:30	66.0	68.0	61.2				
28 Jun 2021	Cloudy	14:00	70.8	72.7	65.2	68	61.8	67	75
		14:05	66.4	67.5	64.1				
		14:10	66.5	68.1	64.1				
		14:15	68.7	71.6	62.9				
		14:20	68.5	71.5	62.9				
		14:25	68.0	71.2	63.0				
30 Jun 2021	Fine	11:00	69.3	70.6	66.6	69	61.8	68	75
		11:05	68.8	70.2	66.6				
		11:10	67.7	69.0	66.0				
		11:15	68.4	69.8	66.3				
		11:20	69.1	70.6	62.9				
		11:25	68.1	69.8	66.0				

* Noise monitoring conducted on 10, 25 June 2021 was measured at 34/F, Roof of Block B
 * Noise monitoring conducted on 3, 17, 30 June 2021 was measured at 20/F, middle level of Block B



Graphic Presentation of Noise Monitoring Result

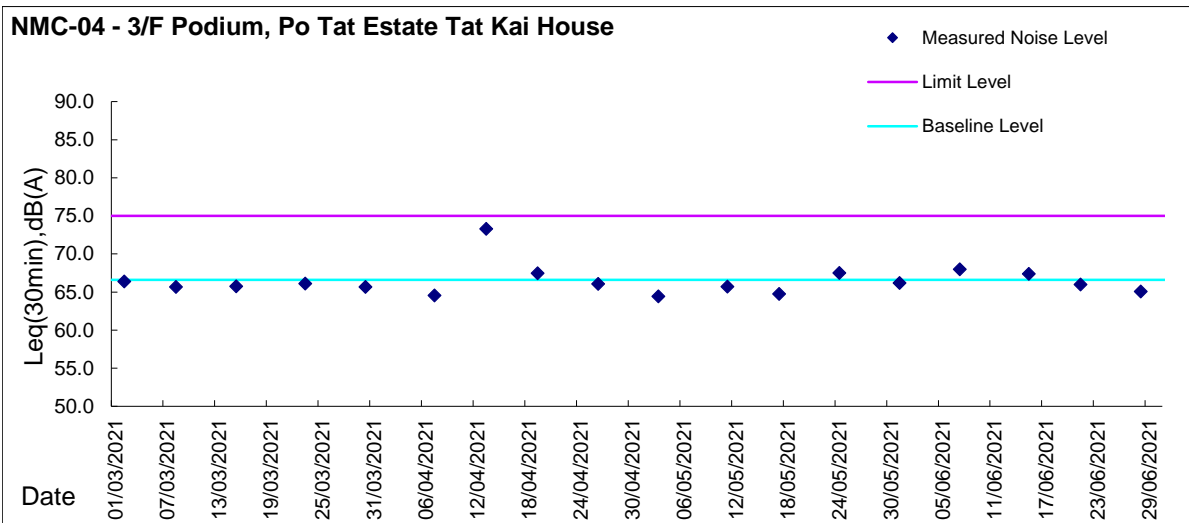
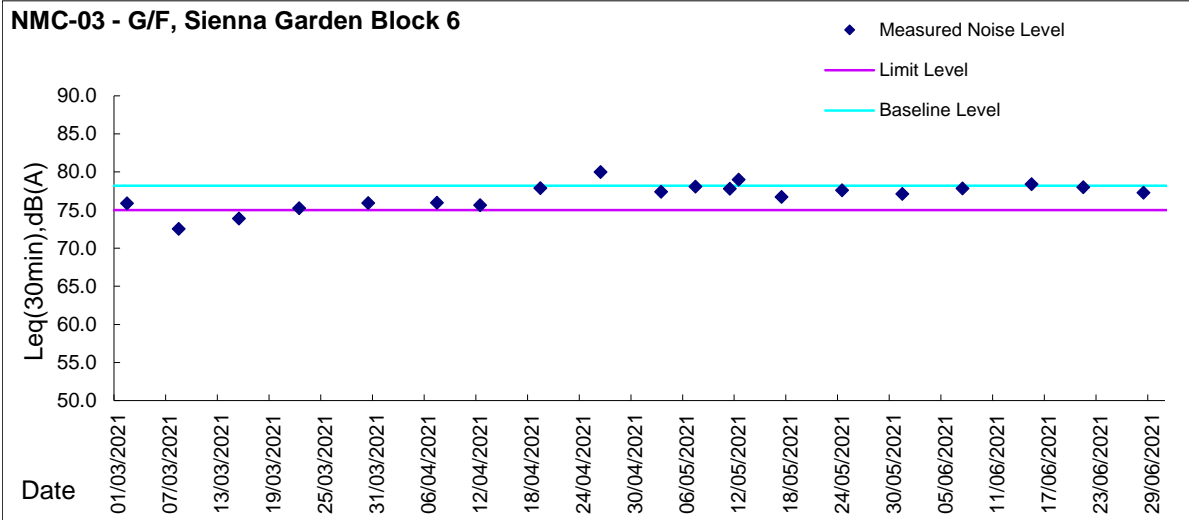
Day Time (0700 - 1900hrs on normal weekdays)





Graphic Presentation of Noise Monitoring Result

Day Time (0700 - 1900hrs on normal weekdays)





Graphic Presentation of Noise Monitoring Result

Day Time (0700 - 1900hrs on normal weekdays)

