



Noise Monitoring Result

Day Time (0700 - 1900hrs on normal weekdays)

Location: NMC-01 - G/F, Kei Shun Special School

Date	Weather	Time	Measurement Noise Level			Average Noise Level	Baseline Level	Construction Noise Level	Limit Level
			Leq	L10	L90	Leq	Leq	Leq	Leq
			Unit: dB(A), (5-min)			Unit: dB(A), (30-min)			
6 Jul 2020	Fine	16:25	70.7	72.5	65.5	70	69.3	63	70
		16:30	70.8	73.0	66.0				
		16:35	70.0	72.0	66.0				
		16:40	69.8	72.5	64.5				
		16:45	69.7	71.5	66.0				
		16:50	70.7	73.0	67.0				
13 Jul 2020	Fine	11:21	68.0	70.3	63.8	68	69.3	<Baseline Level	70
		11:26	68.9	71.8	64.2				
		11:31	67.3	69.7	62.9				
		11:36	67.5	70.0	63.1				
		11:41	68.4	70.7	63.6				
		11:46	67.2	69.7	62.3				
20 Jul 2020	Fine	15:45	68.8	71.1	64.8	69	69.3	<Baseline Level	70
		15:50	68.1	70.6	62.8				
		15:55	67.8	70.1	64.1				
		16:00	69.1	71.6	63.4				
		16:05	68.7	70.8	65.0				
		16:10	68.9	71.3	65.1				
27 Jul 2020	Fine	13:06	67.5	70.0	64.2	68	69.3	<Baseline Level	70
		13:11	68.2	71.3	63.6				
		13:16	68.5	70.8	62.9				
		13:21	68.8	71.1	64.6				
		13:26	68.2	70.7	62.8				
		13:31	68.7	71.5	64.0				



Noise Monitoring Result

Day Time (0700 - 1900hrs on normal weekdays)

Location: NMC-02 - 3/F podium, Shun Lee Disciplined Services Quarters Block 6

Date	Weather	Time	Measurement Noise Level			Average Noise Level	Baseline Level	Construction Noise Level	Limit Level			
			Leq	L10	L90					Leq	Leq	Leq
			Unit: dB(A), (5-min)							Unit: dB(A), (30-min)		
6 Jul 2020	Fine	16:31	72.8	75.6	67.3	72	72.0	<Baseline Level	75			
		16:36	71.5	73.2	68.4							
		16:41	72.2	75.0	67.2							
		16:46	71.9	74.5	68.0							
		16:51	71.2	73.6	67.1							
		16:56	71.9	73.9	68.1							
13 Jul 2020	Fine	13:34	71.9	74.5	67.7	72	72.0	<Baseline Level	75			
		13:39	72.4	75.1	68.7							
		13:44	71.9	74.4	67.7							
		13:49	71.3	74.1	65.6							
		13:54	71.7	74.5	64.3							
		13:59	71.0	73.2	66.8							
20 Jul 2020	Fine	14:59	72.1	74.6	67.7	72	72.0	<Baseline Level	75			
		15:04	72.5	75.0	65.1							
		15:09	71.3	73.9	66.6							
		15:14	72.0	75.0	66.7							
		15:19	71.4	73.7	66.5							
		15:24	70.6	73.5	65.6							
28 Jul 2020	Fine	14:09	72.3	74.4	65.7	71	72.0	<Baseline Level	75			
		14:14	71.6	74.7	67.2							
		14:19	72.0	74.7	67.4							
		14:24	70.0	72.6	65.9							
		14:29	71.9	74.1	67.1							
		14:34	70.1	72.2	66.1							



Noise Monitoring Result

Day Time (0700 - 1900hrs on normal weekdays)

Location: NMC-03 - G/F, Sienna Garden Block 6

Date	Weather	Time	Measurement Noise Level			Average Noise Level	Baseline Level	Construction Noise Level	Limit Level
			Leq	L10	L90	Leq	Leq	Leq	Leq
			Unit: dB(A), (5-min)			Unit: dB(A), (30-min)			
6 Jul 2020	Fine	15:34	75.4	78.8	62.2	76	78.2	<Baseline Level	75
		15:39	76.5	79.6	60.2				
		15:44	76.3	78.8	62.1				
		15:49	75.0	78.8	63.2				
		15:54	76.4	80.3	62.5				
		15:59	75.2	78.3	60.0				
13 Jul 2020	Fine	11:29	73.7	76.8	59.9	74	78.2	<Baseline Level	75
		11:34	73.0	76.3	62.3				
		11:39	75.5	78.7	67.3				
		11:44	75.0	79.1	67.1				
		11:49	73.2	75.3	69.7				
		11:54	74.4	77.4	61.7				
20 Jul 2020	Fine	16:41	76.5	79.7	66.1	77	78.2	<Baseline Level	75
		16:46	76.2	80.0	64.7				
		16:51	76.1	79.7	67.0				
		16:56	77.7	79.9	68.4				
		17:01	76.9	80.5	66.9				
		17:06	77.2	80.0	66.4				
27 Jul 2020	Fine	14:00	76.5	78.8	57.5	75	78.2	<Baseline Level	75
		14:05	75.8	79.4	61.9				
		14:10	74.4	78.1	61.2				
		14:15	75.5	79.1	60.7				
		14:20	74.3	78.2	60.7				
		14:25	72.3	76.5	60.3				



Noise Monitoring Result

Day Time (0700 - 1900hrs on normal weekdays)

Location: NMC-04 - 3/F Podium, Po Tat Estate Tat Kai House

Date	Weather	Time	Measurement Noise Level			Average Noise Level	Baseline Level	Construction Noise Level	Limit Level			
			Leq	L10	L90					Leq	Leq	Leq
			Unit: dB(A), (5-min)							Unit: dB(A), (30-min)		
6 Jul 2020	Fine	14:24	65.1	66.0	64.0	65	66.6	<Baseline Level	75			
		14:29	65.3	66.5	63.5							
		14:34	65.5	66.5	64.0							
		14:39	65.4	66.5	64.0							
		14:44	65.4	66.5	63.5							
13 Jul 2020	Fine	09:09	65.1	67.5	62.9	64	66.6	<Baseline Level	75			
		09:14	64.2	65.4	62.7							
		09:19	65.4	67.0	63.5							
		09:24	64.3	65.2	63.0							
		09:29	63.7	64.6	62.7							
20 Jul 2020	Fine	09:34	63.9	65.1	62.6	68	66.6	62	75			
		14:07	64.2	66.7	62.1							
		14:12	68.2	70.1	65.6							
		14:17	68.3	70.5	64.6							
		14:22	68.1	70.5	64.7							
27 Jul 2020	Fine	14:27	68.5	70.6	64.2	66	66.6	<Baseline Level	75			
		14:32	68.5	70.4	65.3							
		09:39	66.4	67.8	64.0							
		09:44	65.7	67.0	63.7							
		09:49	66.4	67.7	64.8							
		09:54	66.2	67.5	64.5							
09:59	65.8	67.3	63.9									
10:04	67.7	69.4	64.8									



Noise Monitoring Result

Day Time (0700 - 1900hrs on normal weekdays)

Location: NMC-05 - G/F, Hong Wah Court Block B Yee Hong House

Date	Weather	Time	Measurement Noise Level			Average Noise Level	Baseline Level	Construction Noise Level	Limit Level
			Leq	L10	L90	Leq	Leq	Leq	Leq
			Unit: dB(A), (5-min)			Unit: dB(A), (30-min)			
2 Jul 2020	Fine	14:16	76.1	81.4	60.9	71	61.8	70	75
		14:21	62.9	64.9	60.5				
		14:26	67.2	70.0	61.6				
		14:31	65.8	68.4	61.8				
		14:36	72.3	74.0	67.1				
		14:41	66.8	70.5	62.0				
6 Jul 2020	Fine	14:18	71.9	74.7	66.9	71	61.8	71	75
		14:23	71.2	74.1	66.6				
		14:28	69.3	71.7	65.3				
		14:33	71.5	74.8	64.9				
		14:38	69.9	72.8	65.2				
		14:43	72.2	75.1	67.0				
9 Jul 2020	Fine	09:45	69.3	71.1	64.9	68	61.8	66	75
		09:50	63.8	66.1	59.7				
		09:55	64.6	66.1	62.8				
		10:00	67.1	69.5	63.2				
		10:05	68.4	69.8	63.9				
		10:10	69.4	70.6	66.8				
13 Jul 2020	Fine	10:09	62.7	64.8	59.3	64	61.8	61	75
		10:14	62.9	64.9	59.8				
		10:19	65.8	68.3	64.8				
		10:24	62.1	64.5	59.2				
		10:29	66.4	70.2	58.9				
		10:34	63.8	65.4	60.3				
16 Jul 2020	Fine	11:22	69.6	71.1	63.1	72	61.8	71	75
		11:27	67.8	69.4	62.8				
		11:32	63.4	65.0	61.5				
		11:37	63.1	64.6	61.1				
		11:42	63.2	64.5	61.5				
		11:47	78.5	82.9	62.6				
20 Jul 2020	Fine	13:24	74.4	78.4	66.3	71	61.8	71	75
		13:29	74.5	78.6	63.4				
		13:34	67.6	71.7	62.7				
		13:39	66.8	70.8	62.7				
		13:44	68.9	71.6	62.6				
		13:49	68.2	71.5	62.1				
21 Jul 2020 ¹	Fine	09:55	68.1	70.7	63.3	67	61.8	65	75
		10:00	66.7	68.9	63.6				
		10:05	66.7	69.8	61.6				
		10:10	65.4	68.1	61.6				
		10:15	65.5	68.0	61.4				
		10:20	67.7	71.9	61.8				
21 Jul 2020 ¹	Fine	11:05	73.3	75.8	66.7	71	61.8	71	75
		11:10	71.0	73.7	62.1				
		11:15	68.4	71.9	61.9				
		11:20	71.3	73.5	65.3				
		11:25	68.3	72.6	63.8				
		11:30	71.9	76.0	63.8				
22 Jul 2020 ¹	Fine	13:34	69.5	71.4	63.7	70	61.8	70	75
		13:39	69.2	71.2	64.0				
		13:44	70.5	72.0	65.6				
		13:49	72.8	74.4	70.4				
		13:54	70.3	73.2	62.9				
		13:59	66.8	69.4	63.7				
23 Jul 2020	Fine	13:40	71.2	73.1	65.9	70	61.8	69	75
		13:45	70.2	72.3	64.9				
		13:50	71.0	73.0	64.6				
		13:55	66.1	69.2	62.4				
		14:00	69.1	70.7	63.0				
		14:05	68.2	69.7	62.9				



Noise Monitoring Result

Day Time (0700 - 1900hrs on normal weekdays)

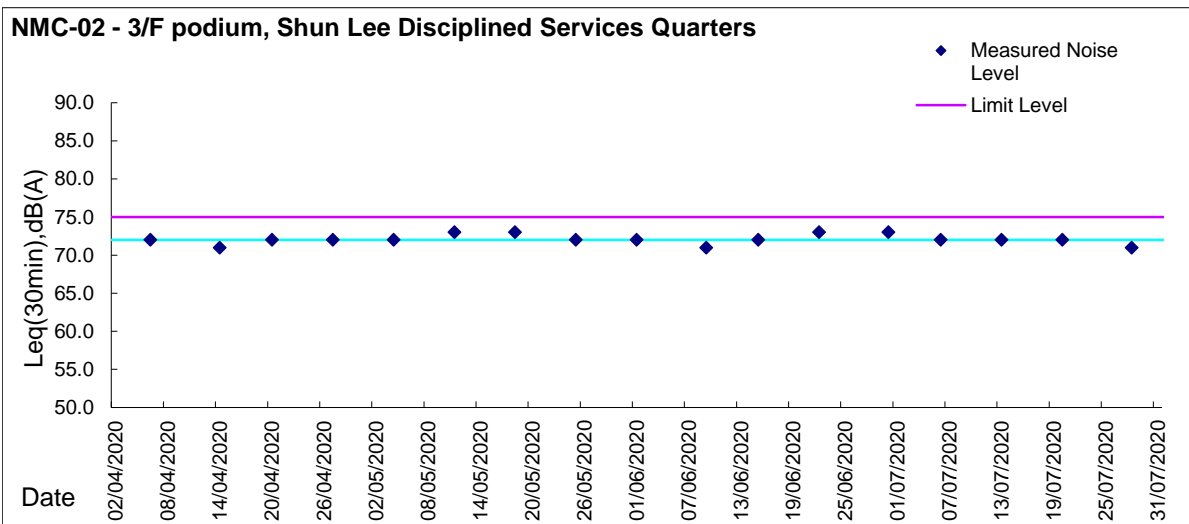
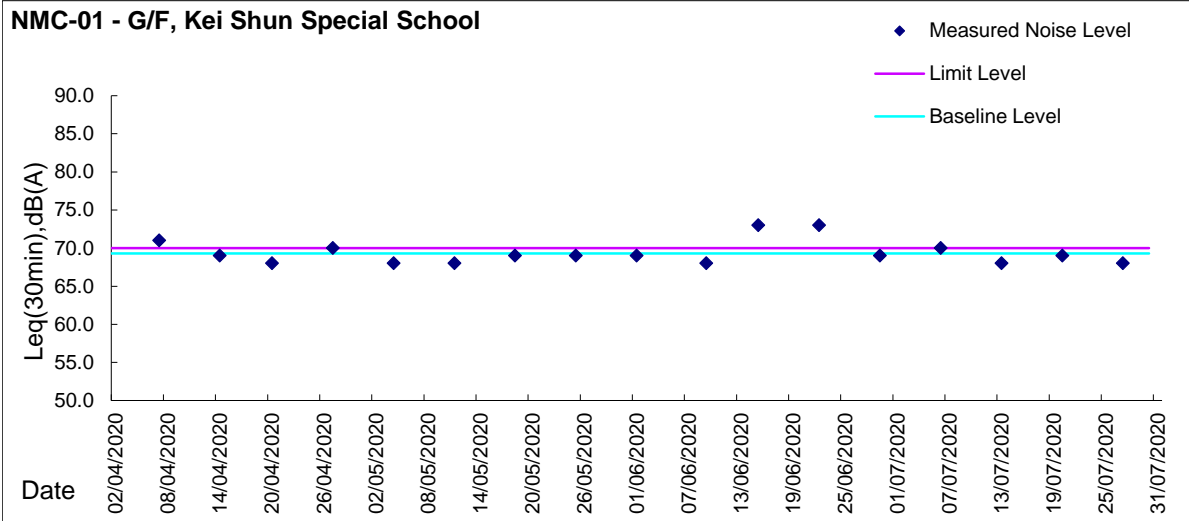
24 July 2020 ¹	Fine	13:57	75.9	78.9	63.1	75	61.8	74	75
		14:02	76.1	79.1	62.2				
		14:07	79.0	83.0	64.2				
		14:12	67.1	69.5	63.3				
		14:17	64.5	66.8	60.3				
		14:22	64.3	65.6	60.1				
27 Jul 2020	Fine	11:01	66.7	69.2	63.0	68	61.8	66	75
		11:06	66.6	69.4	62.7				
		11:11	72.2	75.0	63.6				
		11:16	66.1	68.9	62.4				
		11:21	64.7	66.6	62.3				
		11:26	64.3	66.4	61.7				
30 Jul 2020	Fine	13:00	73.7	75.2	69.0	73	61.8	72	75
		13:05	70.6	72.6	67.1				
		13:10	71.5	73.5	68.4				
		13:15	73.6	75.9	69.0				
		13:20	69.5	70.5	68.2				
		13:25	74.7	76.7	68.8				

Remark 1: additional monitoring due to complaint received



Graphic Presentation of Noise Monitoring Result

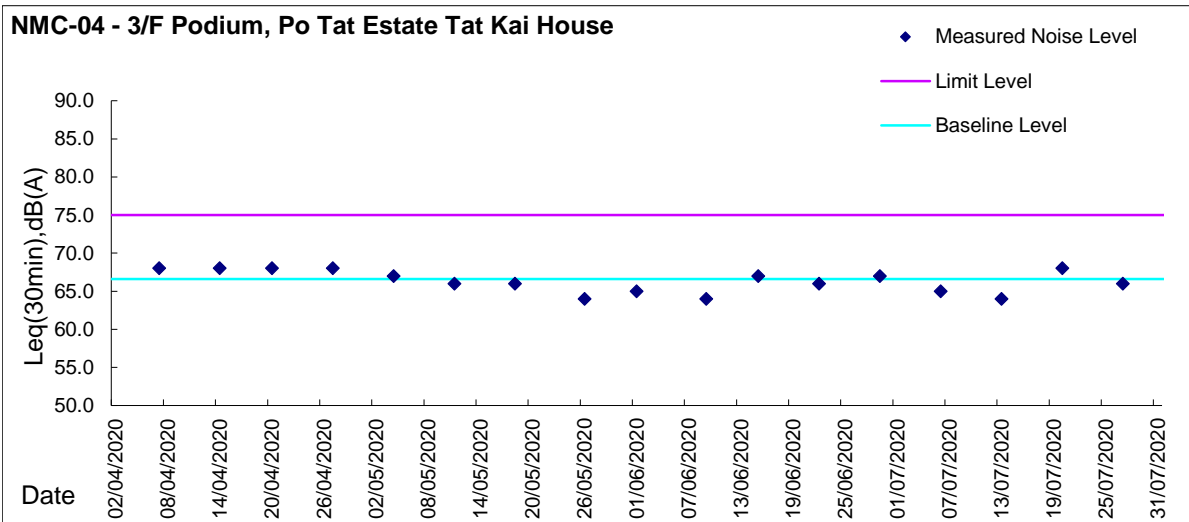
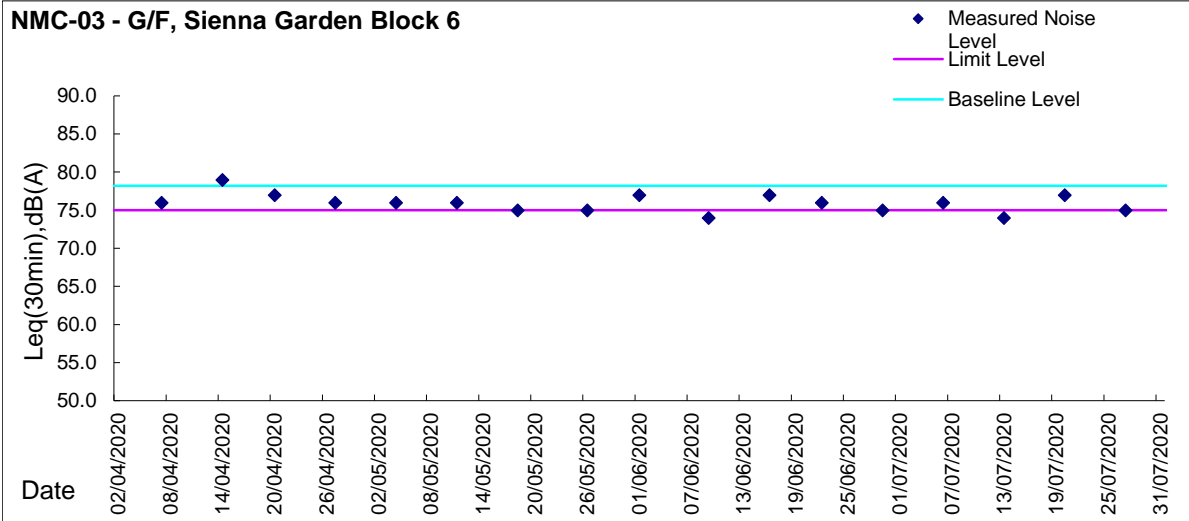
Day Time (0700 - 1900hrs on normal weekdays)





Graphic Presentation of Noise Monitoring Result

Day Time (0700 - 1900hrs on normal weekdays)





Graphic Presentation of Noise Monitoring Result

Day Time (0700 - 1900hrs on normal weekdays)

