



Noise Monitoring Result

Day Time (0700 - 1900hrs on normal weekdays)

Location: NMC-01 - G/F, Kei Shun Special School

Date	Weather	Time	Measurement Noise Level			Average Noise Level	Baseline Level	Construction Noise Level	Limit Level
			Leq	L10	L90	Leq	Leq	Leq	Leq
			Unit: dB(A), (5-min)			Unit: dB(A), (30-min)			
5 Jul 2021	Fine	09:00	70.1	72.4	66.1	70	69.3	64	70
		09:05	70.7	72.1	68.6				
		09:10	69.7	72.1	66.2				
		09:15	71.1	73.2	66.5				
		09:20	69.6	71.9	65.2				
	09:25	71.0	73.5	66.7					
12 Jul 2021	Fine	08:05	70.3	72.3	67.1	70	69.3	64	70
		08:10	70.6	72.9	66.9				
		08:15	70.1	72.4	64.1				
		08:20	71.9	73.4	67.4				
		08:25	70.6	72.5	66.6				
	08:30	67.7	71.8	66.5					
21 Jul 2021	Cloudy	10:00	67.5	70.2	65.6	68	69.3	<Baseline Level	70
		10:05	67.6	70.5	66.0				
		10:10	67.8	70.3	66.4				
		10:15	67.5	70.4	66.0				
		10:20	67.9	70.5	66.5				
	10:25	67.6	70.0	66.3					
26 Jul 2021	Fine	08:05	69.5	72.1	63.4	70	69.3	62	70
		08:10	71.0	73.4	68.1				
		08:15	69.6	72.0	66.3				
		08:20	69.8	72.0	66.0				
		08:25	70.3	73.1	68.0				
	08:30	69.4	71.9	65.4					



Noise Monitoring Result

Day Time (0700 - 1900hrs on normal weekdays)

Location: NMC-02 - 3/F podium, Shun Lee Disciplined Services Quarters Block 6

Date	Weather	Time	Measurement Noise Level			Average Noise Level	Baseline Level	Construction Noise Level	Limit Level
			Leq	L10	L90	Leq	Leq	Leq	Leq
			Unit: dB(A), (5-min)			Unit: dB(A), (30-min)			
5 Jul 2021	Fine	09:45	75.2	78.6	71.4	74	72.0	70	75
		09:50	74.2	75.9	72.4				
		09:55	74.2	75.8	72.0				
		10:00	73.6	75.6	70.7				
		10:05	74.3	76.1	71.5				
		10:10	74.0	76.0	71.6				
12 Jul 2021	Fine	08:45	72.7	75.2	68.7	73	72.0	64	75
		08:50	73.4	76.0	69.4				
		08:55	72.7	75.2	68.3				
		09:00	72.5	75.2	68.9				
		09:05	71.8	74.0	69.0				
		09:10	72.3	74.9	67.7				
21 Jul 2021	Cloudy	10:45	70.5	74.5	69.8	71	72.0	<Baseline Level	75
		10:50	71.0	74.6	69.5				
		10:55	71.2	74.8	69.8				
		11:00	71.0	75.0	69.5				
		11:05	71.3	74.8	69.6				
		11:10	70.5	74.6	69.5				
26 Jul 2021	Fine	08:40	72.9	75.8	67.2	72	72.0	62	75
		08:45	72.3	74.4	68.9				
		08:50	72.2	74.2	69.0				
		08:55	72.1	75.2	68.4				
		09:00	72.8	74.7	69.3				
		09:05	72.2	74.2	68.0				



Noise Monitoring Result

Day Time (0700 - 1900hrs on normal weekdays)

Location: NMC-03 - G/F, Sienna Garden Block 6

Date	Weather	Time	Measurement Noise Level			Average Noise Level	Baseline Level	Construction Noise Level	Limit Level
			Leq	L10	L90	Leq	Leq	Leq	Leq
			Unit: dB(A), (5-min)			Unit: dB(A), (30-min)			
5 Jul 2021	Fine	10:35	77.5	80.7	71.4	78	78.2	<Baseline Level	75
		10:40	77.1	80.2	71.0				
		10:45	78.2	80.0	74.3				
		10:50	77.7	79.9	74.3				
		10:55	77.7	80.4	74.1				
		11:00	77.6	79.6	73.4				
12 Jul 2021	Fine	09:35	74.9	78.7	63.1	76	78.2	<Baseline Level	75
		09:40	77.0	79.8	65.7				
		09:45	77.4	78.9	64.4				
		09:50	75.7	79.4	66.2				
		09:55	76.6	80.0	63.7				
		10:00	73.9	77.8	65.3				
21 Jul 2021	Cloudy	11:30	76.5	78.9	65.4	76	78.2	<Baseline Level	75
		11:35	76.4	78.5	65.6				
		11:40	76.6	79.0	66.0				
		11:45	76.5	79.2	65.8				
		11:50	76.2	79.2	65.7				
		11:55	76.5	78.5	66.2				
26 Jul 2021	Fine	09:35	77.8	80.5	74.7	77	78.2	<Baseline Level	75
		09:40	76.9	79.5	71.8				
		09:45	76.4	79.0	72.6				
		09:50	76.6	78.8	72.4				
		09:55	77.4	80.0	72.5				
		10:00	76.5	79.5	72.4				



Noise Monitoring Result

Day Time (0700 - 1900hrs on normal weekdays)

Location: NMC-04 - 3/F Podium, Po Tat Estate Tat Kai House

Date	Weather	Time	Measurement Noise Level			Average Noise Level	Baseline Level	Construction Noise Level	Limit Level
			Leq	L10	L90	Leq	Leq	Leq	Leq
			Unit: dB(A), (5-min)			Unit: dB(A), (30-min)			
5 Jul 2021	Fine	10:55	60.5	62.5	57.5	61	66.6	<Baseline Level	75
		11:00	61.0	63.0	58.0				
		11:05	61.2	63.5	57.8				
		11:10	61.0	62.5	57.9				
		11:15	61.2	62.4	58.0				
12 Jul 2021	Fine	11:20	61.4	62.7	58.2	64	66.6	<Baseline Level	75
		11:30	63.9	65.2	62.4				
		11:35	63.4	64.6	62.1				
		11:40	63.4	64.8	61.9				
		11:45	63.8	64.9	62.3				
21 Jul 2021	Cloudy	11:50	64.2	65.3	63.0	64	66.6	<Baseline Level	75
		11:55	64.1	65.0	62.6				
		08:55	63.8	65.4	62.5				
		09:00	64.0	66.3	62.6				
		09:05	64.1	66.3	62.7				
26 Jul 2021	Cloudy	09:10	64.0	66.0	63.0	64	66.6	<Baseline Level	75
		09:15	63.9	65.8	62.1				
		09:20	62.5	63.4	60.7				
		10:20	64.5	65.8	62.6				
		10:25	64.2	65.7	62.5				
		10:30	63.8	65.5	62.1				
		10:35	63.8	65.8	62.3				
		10:40	63.9	65.6	62.1				
		10:45	64.0	65.8	62.2				



Noise Monitoring Result

Day Time (0700 - 1900hrs on normal weekdays)

Location: NMC-05 - G/F, Hong Wah Court Block B Yee Hong House

Date	Weather	Time	Measurement Noise Level			Average Noise Level Leq	Baseline Level Leq	Construction Noise Level Leq	Limit Level Leq
			Leq	L10	L90				
			Unit: dB(A), (5-min)						
5 Jul 2021	Fine	11:30	60.2	61.2	56.6	60	61.8	<Baseline Level	75
		11:35	60.9	63.6	57.8				
		11:40	60.4	62.4	58.0				
		11:45	60.5	62.2	58.4				
		11:50	59.2	61.0	56.6				
		11:55	59.2	61.1	56.2				
8 Jul 2021	Fine	10:45	68.1	69.1	66.8	68	61.8	67	75
		10:55	68.1	69.1	66.8				
		11:05	68.5	69.5	66.9				
		11:15	68.2	69.4	66.5				
		11:25	67.8	68.7	66.5				
		11:35	68.7	69.6	67.0				
12 Jul 2021	Fine	10:40	63.0	65.2	59.5	63	61.8	57	75
		10:45	64.9	67.1	60.1				
		10:50	62.8	64.8	60.0				
		10:55	62.8	64.7	60.2				
		11:00	63.2	65.8	60.2				
		11:05	61.3	63.3	59.0				
15 Jul 2021	Fine	10:35	68.9	70.6	66.5	69	61.8	69	75
		10:40	68.7	70.5	65.9				
		10:45	67.9	69.2	66.0				
		10:50	68.7	70.3	66.6				
		10:55	67.9	69.1	66.4				
		11:00	72.3	76.4	66.2				
19 Jul 2021	Cloudy	11:30	63.0	65.1	60.5	62	61.8	<Baseline Level	75
		11:35	65.6	66.8	58.9				
		11:40	62.9	64.7	59.3				
		11:45	72.3	76.4	66.2				
		11:50	72.0	76.1	67.1				
		11:55	72.5	76.3	67.0				
22 Jul 2021	Fine	10:40	67.9	69.0	66.7	68	61.8	67	75
		10:45	67.7	68.5	66.4				
		10:50	67.9	69.0	66.2				
		10:55	67.7	68.9	66.3				
		11:00	67.6	69.2	65.5				
		11:05	67.8	69.8	65.9				
26 Jul 2021	Cloudy	11:00	61.4	63.4	56.0	61	61.8	<Baseline Level	75
		11:05	59.8	61.6	55.2				
		11:10	59.0	60.8	55.6				
		11:15	61.2	62.2	56.6				
		11:20	61.2	63.0	57.6				
		11:25	60.5	61.4	56.4				
28 Jul 2021	Fine	10:35	69.0	70.7	66.9	69	61.8	68	75
		10:40	69.2	70.6	66.8				
		10:45	68.9	70.5	66.8				
		10:50	69.4	71.0	66.9				
		10:55	68.0	69.5	66.2				
		11:00	68.0	69.5	66.2				

* Noise monitoring conducted on 08, 22 July 2021 was measured at 34/F, Roof of Block B

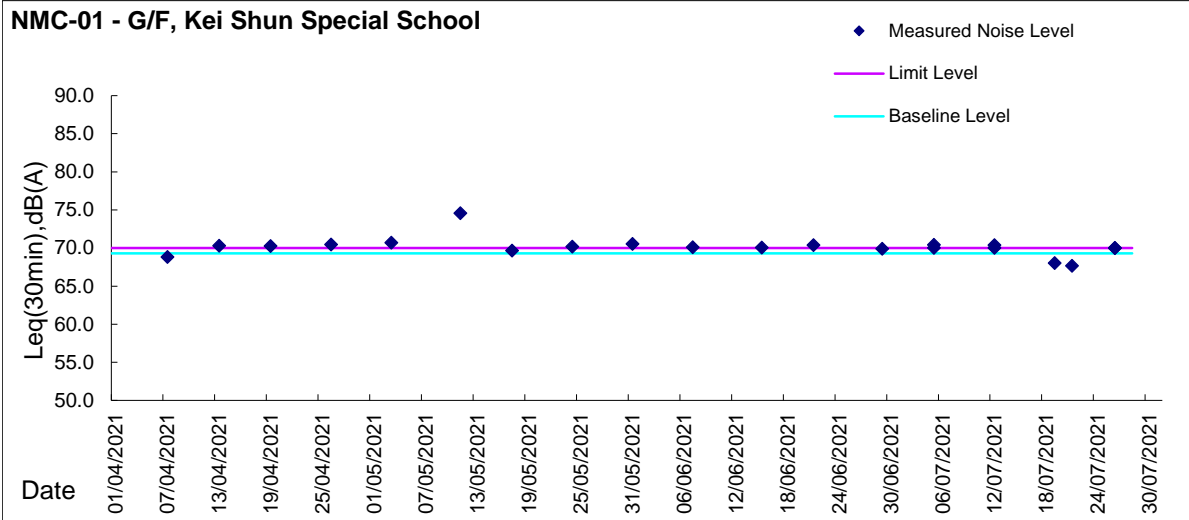
* Noise monitoring conducted on 15, 28 July 2021 was measured at 20/F, middle level of Block B



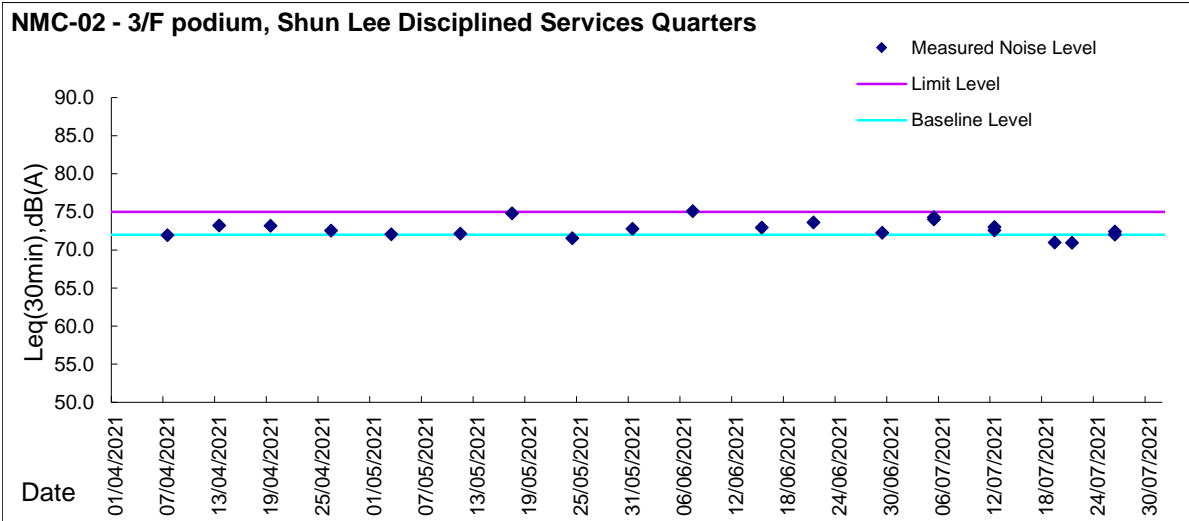
Graphic Presentation of Noise Monitoring Result

Day Time (0700 - 1900hrs on normal weekdays)

NMC-01 - G/F, Kei Shun Special School



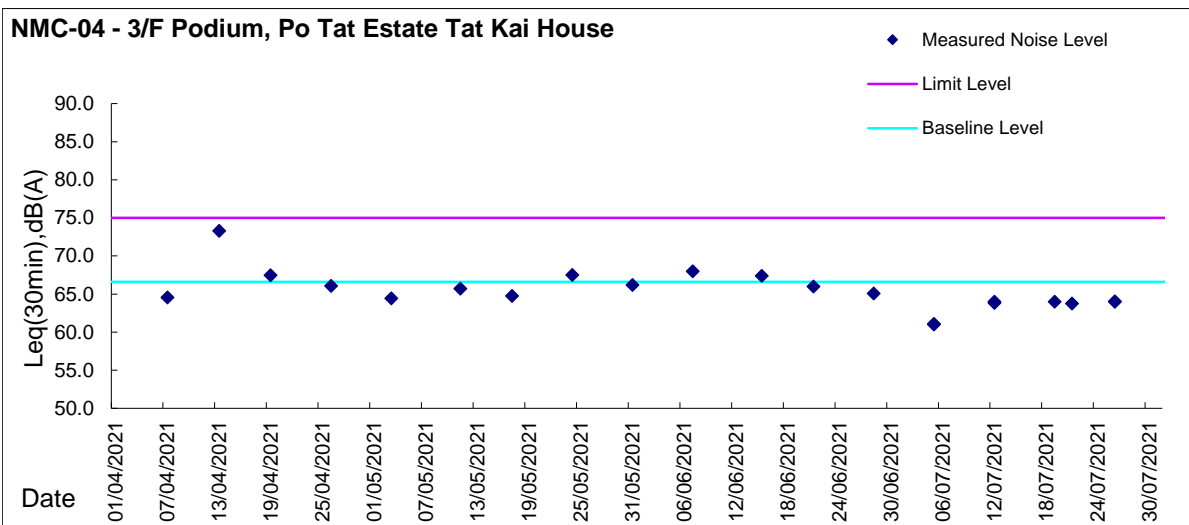
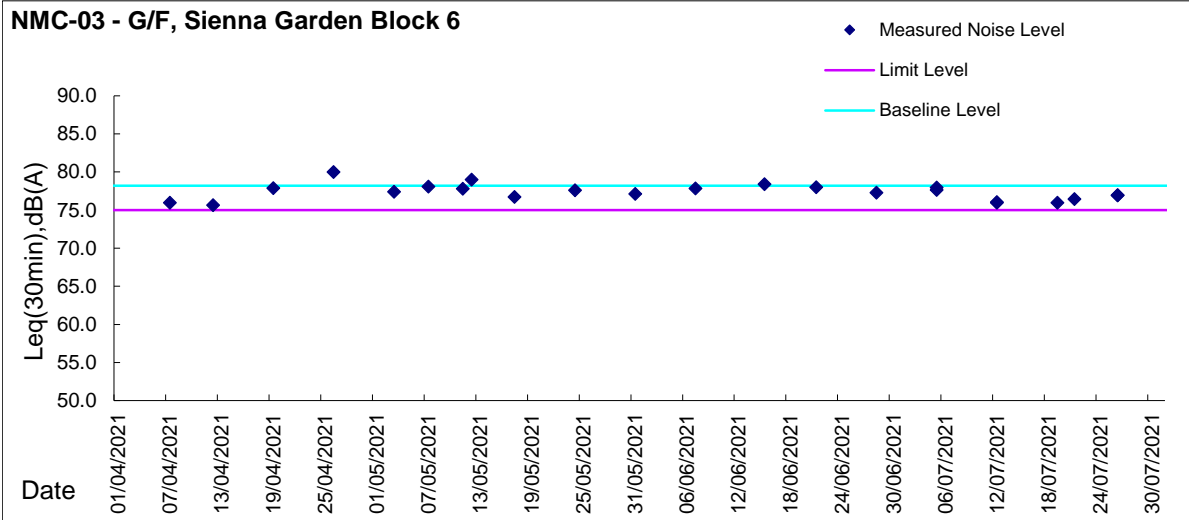
NMC-02 - 3/F podium, Shun Lee Disciplined Services Quarters





Graphic Presentation of Noise Monitoring Result

Day Time (0700 - 1900hrs on normal weekdays)





Graphic Presentation of Noise Monitoring Result

Day Time (0700 - 1900hrs on normal weekdays)

