



Noise Monitoring Result

Day Time (0700 - 1900hrs on normal weekdays)

Location: NMC-01 - G/F, Kei Shun Special School

Date	Weather	Time	Measurement Noise Level			Average Noise Level	Baseline Level	Construction Noise Level	Limit Level
			Leq	L10	L90	Leq	Leq	Leq	Leq
			Unit: dB(A), (5-min)			Unit: dB(A), (30-min)			
11 Aug 2020	Fine	11:05	70.9	72.7	64.9	70	69.3	63	70
		11:10	71.8	73.1	66.6				
		11:15	69.5	71.7	65.2				
		11:20	70.4	73.1	64.6				
		11:25	69.5	72.1	66.2				
		11:30	68.4	70.7	64.8				
17 Aug 2020	Fine	11:27	67.9	70.0	63.6	68	69.3	<Baseline Level	70
		11:32	68.8	71.6	64.0				
		11:37	68.5	71.0	63.5				
		11:42	68.1	70.6	63.9				
		11:47	68.2	70.9	64.0				
		11:52	67.9	70.3	63.1				
24 Aug 2020	Fine	10:27	68.2	70.6	64.7	69	69.3	<Baseline Level	70
		10:32	68.4	70.7	64.1				
		10:37	69.1	71.2	64.7				
		10:42	69.3	72.2	64.9				
		10:47	68.3	70.5	63.0				
		10:52	69.0	71.3	65.8				
31 Aug 2020	Fine	10:56	68.6	71.1	63.5	68	69.3	<Baseline Level	70
		11:01	67.9	70.2	64.5				
		11:06	67.9	70.2	63.7				
		11:11	68.3	70.8	63.4				
		11:16	68.6	70.8	64.9				
		11:21	68.3	70.6	62.9				



Noise Monitoring Result

Day Time (0700 - 1900hrs on normal weekdays)

Location: NMC-02 - 3/F podium, Shun Lee Disciplined Services Quarters Block 6

Date	Weather	Time	Measurement Noise Level			Average Noise Level	Baseline Level	Construction Noise Level	Limit Level			
			Leq	L10	L90					Leq	Leq	Leq
			Unit: dB(A), (5-min)							Unit: dB(A), (30-min)		
11 Aug 2020	Fine	13:16	71.7	74.6	65.6	71	72.0	<Baseline Level	75			
		13:21	71.6	74.8	63.7							
		13:26	70.4	73.1	66.4							
		13:31	71.9	74.2	66.9							
		13:36	71.1	74.4	64.6							
		13:41	71.5	73.7	66.7							
18 Aug 2020	Cloudy	10:18	72.7	75.2	70.7	72	72.0	60	75			
		10:23	72.1	75.1	66.5							
		10:28	71.4	74.0	69.4							
		10:33	72.6	75.0	68.4							
		10:38	73.0	75.2	66.4							
		10:43	71.4	74.4	66.0							
24 Aug 2020	Fine	09:41	72.3	74.5	68.4	71	72.0	<Baseline Level	75			
		09:46	71.4	73.1	67.1							
		09:51	71.1	74.1	67.0							
		09:56	71.0	73.3	67.6							
		10:01	71.5	74.3	66.2							
		10:06	70.8	72.7	66.5							
31 Aug 2020	Fine	10:03	71.3	73.5	67.7	72	72.0	54	75			
		10:08	73.1	75.5	69.9							
		10:13	72.1	74.4	67.7							
		10:18	71.8	74.3	68.0							
		10:23	72.8	74.5	68.5							
		10:28	70.9	73.2	65.5							



Noise Monitoring Result

Day Time (0700 - 1900hrs on normal weekdays)

Location: NMC-03 - G/F, Sienna Garden Block 6

Date	Weather	Time	Measurement Noise Level			Average Noise Level	Baseline Level	Construction Noise Level	Limit Level
			Leq	L10	L90	Leq	Leq	Leq	Leq
			Unit: dB(A), (5-min)			Unit: dB(A), (30-min)			
11 Aug 2020	Fine	09:45	77.2	80.9	69.6	78	78.2	<Baseline Level	75
		09:50	77.6	81.0	69.4				
		09:55	77.9	81.8	70.9				
		10:00	78.0	81.9	69.9				
		10:05	76.9	80.5	69.8				
		10:10	77.9	81.5	71.7				
17 Aug 2020	Fine	11:15	73.5	76.4	65.4	76	78.2	<Baseline Level	75
		11:20	76.5	79.3	69.3				
		11:25	76.5	78.0	65.0				
		11:30	74.0	76.9	64.5				
		11:35	77.1	80.0	66.0				
		11:40	76.2	77.9	66.8				
24 Aug 2020	Fine	11:18	76.1	79.7	69.0	75	78.2	<Baseline Level	75
		11:23	74.6	77.4	68.6				
		11:28	75.7	78.1	69.0				
		11:33	75.5	78.5	68.2				
		11:38	72.2	75.6	64.3				
		11:43	76.1	80.0	63.8				
31 Aug 2020	Fine	15:39	77.5	80.8	70.9	76	78.2	<Baseline Level	75
		15:44	75.0	77.3	71.5				
		15:49	74.9	77.3	70.2				
		15:54	75.9	78.3	68.9				
		15:59	74.8	78.0	64.6				
		16:04	76.1	79.5	64.2				



Noise Monitoring Result

Day Time (0700 - 1900hrs on normal weekdays)

Location: NMC-04 - 3/F Podium, Po Tat Estate Tat Kai House

Date	Weather	Time	Measurement Noise Level			Average Noise Level	Baseline Level	Construction Noise Level	Limit Level			
			Leq	L10	L90					Leq	Leq	Leq
			Unit: dB(A), (5-min)							Unit: dB(A), (30-min)		
11 Aug 2020	Fine	10:54	67.2	68.6	64.9	67	66.6	58	75			
		10:59	67.5	69.8	64.5							
		11:04	67.7	69.8	64.8							
		11:09	67.5	69.0	65.4							
		11:14	67.5	69.0	64.9							
17 Aug 2020	Fine	11:19	64.7	65.7	63.2	68	66.6	61	75			
		10:38	68.0	69.8	65.3							
		10:43	67.5	69.1	64.9							
		10:48	67.5	69.5	63.9							
		10:53	68.0	69.7	64.2							
24 Aug 2020	Fine	10:58	67.6	69.0	63.1	66	66.6	<Baseline Level	75			
		11:03	66.7	68.4	64.5							
		14:05	66.1	67.7	64.0							
		14:10	67.9	69.7	64.3							
		14:15	67.7	69.6	64.3							
31 Aug 2020	Fine	14:20	66.8	69.0	63.9	66	66.6	<Baseline Level	75			
		14:25	64.5	66.2	62.8							
		14:30	64.4	65.5	62.9							
		14:19	66.3	67.4	64.5							
		14:24	65.4	66.7	63.4							
		14:29	66.0	66.9	64.7	66	66.6	<Baseline Level	75			
		14:34	66.6	67.5	65.4							
		14:39	66.0	67.1	64.7							
		14:44	66.0	67.3	64.0							



Noise Monitoring Result

Day Time (0700 - 1900hrs on normal weekdays)

Location: NMC-05 - G/F, Hong Wah Court Block B Yee Hong House

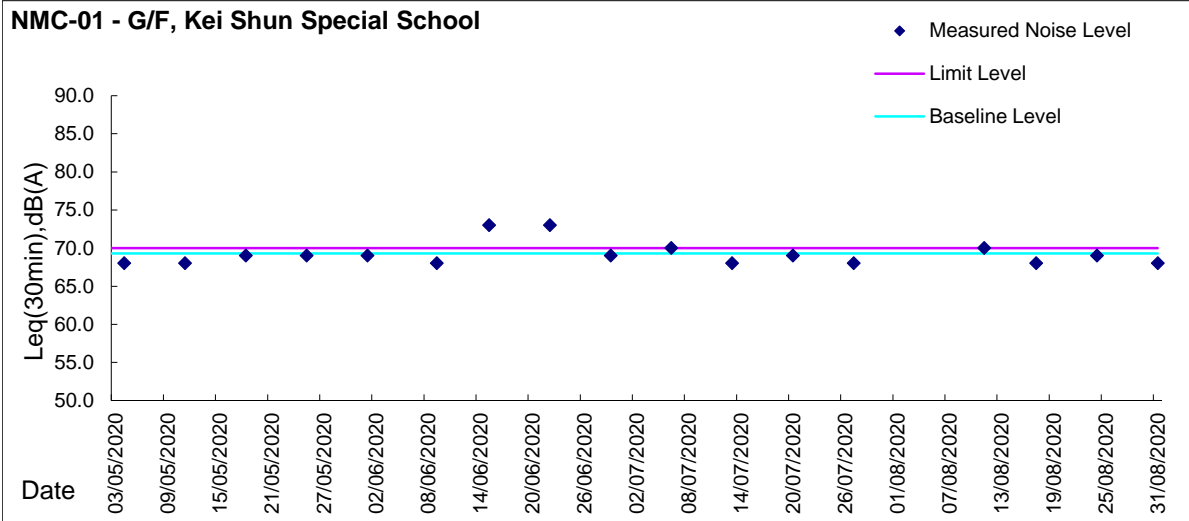
Date	Weather	Time	Measurement Noise Level			Average Noise Level	Baseline Level	Construction Noise Level	Limit Level			
			Leq	L10	L90					Leq	Leq	Leq
			Unit: dB(A), (5-min)							Unit: dB(A), (30-min)		
11 Aug 2020	Fine	09:54	71.1	72.1	70.0	72	61.8	71	75			
		09:59	71.7	72.8	65.4							
		10:04	71.7	73.3	66.9							
		10:09	72.5	73.9	70.7							
		10:14	71.7	73.4	69.3							
		10:19	71.9	73.3	70.0							
13 Aug 2020	Fine	13:41	70.7	72.0	64.5	71	61.8	70	75			
		13:46	68.7	70.7	65.7							
		13:51	71.5	73.3	67.2							
		13:56	71.7	73.3	69.7							
		14:01	71.4	72.8	67.4							
		14:06	70.4	72.3	65.1							
17 Aug 2020	Fine	09:44	63.2	64.8	60.7	63	61.8	57	75			
		09:49	64.4	67.1	59.8							
		09:54	62.3	64.2	59.5							
		09:59	62.0	64.0	58.8							
		10:04	62.9	65.4	59.4							
		10:09	62.7	64.8	59.3							
20 Aug 2020	Fine	14:34	69.5	73.1	63.6	71	61.8	70	75			
		14:39	70.6	75.2	63.8							
		14:44	72.5	76.8	64.5							
		14:49	71.2	72.3	68.8							
		14:54	70.6	72.2	65.0							
		14:59	70.9	72.3	64.1							
24 Aug 2020	Fine	15:01	71.9	73.9	64.6	69	61.8	68	75			
		15:06	65.6	67.0	63.1							
		15:11	71.3	73.0	64.4							
		15:16	68.2	70.8	63.4							
		15:21	66.1	68.0	63.1							
		15:26	66.1	67.6	63.0							
27 Aug 2020	Cloudy	13:52	66.7	69.4	61.6	68	61.8	67	75			
		13:57	68.3	69.3	61.6							
		14:02	68.1	68.4	61.5							
		14:07	68.2	69.5	61.2							
		14:12	67.7	69.8	63.1							
		14:17	68.5	70.2	65.4							
31 Aug 2020	Fine	13:13	69.2	72.2	62.4	71	61.8	70	75			
		13:18	69.8	72.7	64.8							
		13:23	71.5	73.8	65.7							
		13:28	71.0	72.3	68.0							
		13:33	70.4	71.3	68.2							
		13:38	71.0	73.3	66.4							



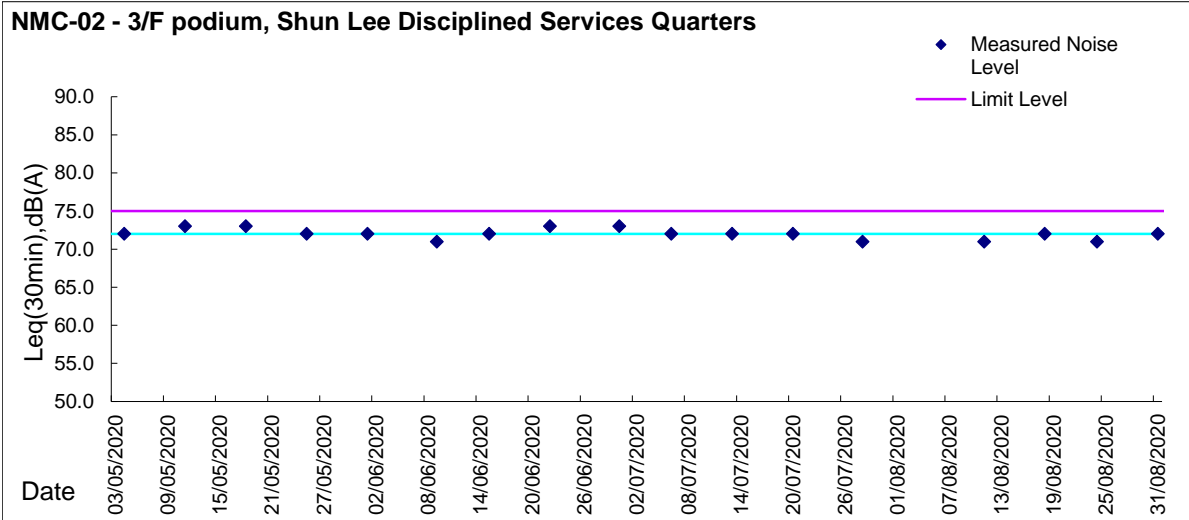
Graphic Presentation of Noise Monitoring Result

Day Time (0700 - 1900hrs on normal weekdays)

NMC-01 - G/F, Kei Shun Special School



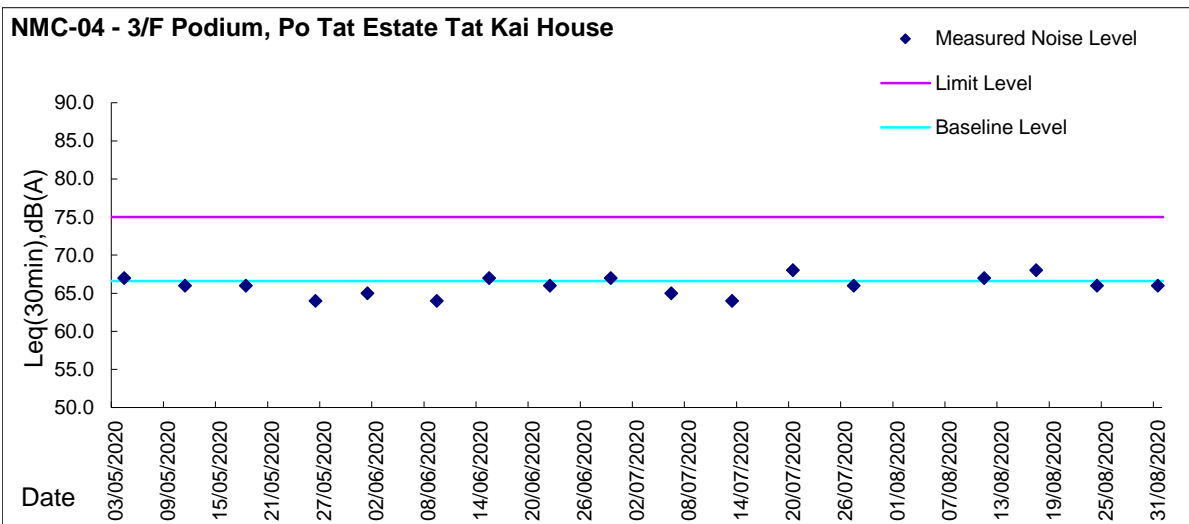
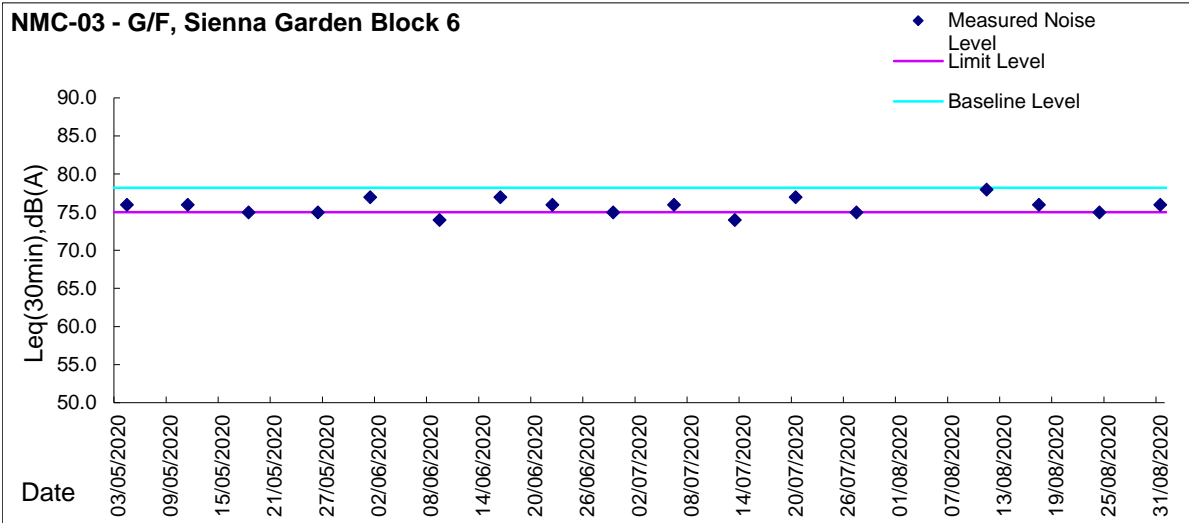
NMC-02 - 3/F podium, Shun Lee Disciplined Services Quarters





Graphic Presentation of Noise Monitoring Result

Day Time (0700 - 1900hrs on normal weekdays)





Graphic Presentation of Noise Monitoring Result

Day Time (0700 - 1900hrs on normal weekdays)

