



Noise Monitoring Result

Day Time (0700 - 1900hrs on normal weekdays)

Location: NMC-01 - G/F, Kei Shun Special School

Date	Weather	Time	Measurement Noise Level			Average Noise Level	Baseline Level	Construction Noise Level	Limit Level
			Leq	L10	L90	Leq	Leq	Leq	Leq
			Unit: dB(A), (5-min)			Unit: dB(A), (30-min)			
7 Dec 2020	Fine	13:07	68.9	71.4	64.9	69	69.3	<Baseline Level	70
		13:12	68.6	71.3	63.9				
		13:17	68.3	70.2	64.2				
		13:22	69.2	71.5	65.1				
		13:27	69.2	71.5	65.1				
14 Dec 2020	Fine	10:03	70.4	71.8	64.7	70	69.3	62	70
		10:08	70.7	73.7	63.7				
		10:13	69.1	71.7	64.3				
		10:18	68.7	71.4	63.9				
		10:23	70.1	71.5	63.8				
22 Dec 2020	Fine	10:28	70.8	72.4	64.7	70	69.3	63	70
		11:05	69.8	79.0	63.6				
		11:10	67.4	75.2	63.8				
		11:15	71.0	79.8	63.2				
		11:20	71.2	76.8	64.0				
28 Dec 2020	Fine	11:25	70.3	79.8	64.0	72	69.3	68	70
		11:30	70.2	80.2	65.8				
		11:08	69.0	71.0	64.4				
		11:13	75.8	87.4	65.2				
		11:18	67.9	70.4	63.8				
		11:23	68.8	71.8	64.2				
		11:28	72.8	78.4	64.0				
		11:33	70.8	74.0	64.6				



Noise Monitoring Result

Day Time (0700 - 1900hrs on normal weekdays)

Location: NMC-02 - 3/F podium, Shun Lee Disciplined Services Quarters Block 6

Date	Weather	Time	Measurement Noise Level			Average Noise Level	Baseline Level	Construction Noise Level	Limit Level
			Leq	L10	L90	Leq	Leq	Leq	Leq
			Unit: dB(A), (5-min)			Unit: dB(A), (30-min)			
7 Dec 2020	Fine	13:48	71.1	73.7	66.9	71	72.0	<Baseline Level	75
		13:53	71.0	73.4	67.2				
		13:58	70.8	72.9	67.2				
		14:03	71.7	74.9	66.7				
		14:08	70.6	73.0	66.0				
14 Dec 2020	Fine	09:15	72.0	74.3	67.9	72	72.0	<Baseline Level	75
		09:20	72.0	74.3	68.2				
		09:25	72.2	74.3	68.3				
		09:30	72.6	75.4	68.7				
		09:35	70.7	72.7	67.6				
22 Dec 2020	Fine	09:40	71.1	73.4	67.8	73	72.0	64	75
		11:12	71.8	74.3	66.5				
		11:17	72.8	75.0	67.3				
		11:22	72.4	74.7	68.5				
		11:27	72.8	75.1	69.4				
29 Dec 2020	Fine	11:32	73.5	76.8	68.6	75	72.0	71	75
		11:37	72.5	75.2	69.0				
		10:01	74.2	76.1	71.1				
		10:06	74.2	75.5	67.9				
		10:11	76.4	79.3	72.1				
		10:16	71.7	73.9	68.3				
		10:21	76.5	79.6	68.2				
		10:26	73.3	74.6	70.0				



Noise Monitoring Result

Day Time (0700 - 1900hrs on normal weekdays)

Location: NMC-03 - G/F, Sienna Garden Block 6

Date	Weather	Time	Measurement Noise Level			Average Noise Level	Baseline Level	Construction Noise Level	Limit Level
			Leq	L10	L90	Leq	Leq	Leq	Leq
			Unit: dB(A), (5-min)			Unit: dB(A), (30-min)			
7 Dec 2020	Fine	14:47	76.6	80.0	65.2	76	78.2	<Baseline Level	75
		14:52	75.1	78.7	64.7				
		14:57	77.3	80.1	63.4				
		15:02	75.9	79.5	62.1				
		15:07	75.5	79.7	59.3				
		15:12	75.7	79.2	64.5				
14 Dec 2020	Fine	10:57	75.7	79.8	57.7	76	78.2	<Baseline Level	75
		11:02	74.3	78.5	62.1				
		11:07	76.5	80.3	60.4				
		11:12	76.3	79.7	63.0				
		11:17	76.6	79.5	63.1				
		11:22	77.3	80.8	61.7				
21 Dec 2020	Fine	10:59	77.8	80.3	63.5	77	78.2	<Baseline Level	75
		11:04	76.3	80.6	61.3				
		11:09	77.4	80.3	63.6				
		11:14	77.2	81.4	63.8				
		11:19	75.6	79.6	62.3				
		11:24	76.9	80.4	63.0				
28 Dec 2020	Fine	14:50	76.5	78.8	59.8	75	78.2	<Baseline Level	75
		14:55	74.8	77.8	60.2				
		15:00	75.1	78.2	60.2				
		15:05	74.2	77.6	61.6				
		15:10	73.0	76.4	60.8				
		15:15	76.0	79.2	65.4				



Noise Monitoring Result

Day Time (0700 - 1900hrs on normal weekdays)

Location: NMC-04 - 3/F Podium, Po Tat Estate Tat Kai House

Date	Weather	Time	Measurement Noise Level			Average Noise Level	Baseline Level	Construction Noise Level	Limit Level
			Leq	L10	L90	Leq	Leq	Leq	Leq
			Unit: dB(A), (5-min)			Unit: dB(A), (30-min)			
7 Dec 2020	Fine	11:14	66.2	67.4	64.4	65	66.6	<Baseline Level	75
		11:19	66.7	67.9	64.5				
		11:24	65.8	67.5	63.1				
		11:29	65.2	66.5	63.7				
		11:34	63.9	65.3	62.4				
		11:39	63.3	64.5	61.8				
14 Dec 2020	Fine	13:07	63.2	65.4	62.2	66	66.6	<Baseline Level	75
		13:12	66.0	67.5	63.1				
		13:17	66.2	67.7	64.1				
		13:22	66.8	68.2	64.4				
		13:27	66.1	67.5	63.6				
		13:32	66.2	67.2	64.8				
22 Dec 2020	Fine	10:09	65.4	66.8	63.6	66	66.6	<Baseline Level	75
		10:14	66.1	67.3	64.6				
		10:19	66.3	67.7	64.5				
		10:24	65.4	66.7	63.6				
		10:29	65.6	66.8	64.0				
		10:34	64.8	65.9	63.3				
28 Dec 2020	Fine	13:49	66.9	69.6	62.4	67	66.6	50	75
		13:54	67.7	69.4	64.6				
		13:59	66.0	68.4	62.0				
		14:04	65.8	69.2	61.6				
		14:09	65.6	68.0	61.2				
		14:14	67.7	70.1	61.4				



Noise Monitoring Result

Day Time (0700 - 1900hrs on normal weekdays)

Location: NMC-05 - G/F, Hong Wah Court Block B Yee Hong House

Date	Weather	Time	Measurement Noise Level			Average Noise Level	Baseline Level	Construction Noise Level	Limit Level
			Leq	L10	L90	Leq	Leq	Leq	Leq
			Unit: dB(A), (5-min)			Unit: dB(A), (30-min)			
3 Dec 2020	Fine	14:56	76.9	77.8	66.6	75	61.8	75	75
		15:01	77.4	79.7	67.7				
		15:06	77.6	79.7	68.6				
		15:11	69.2	70.2	68.0				
		15:16	69.1	70.1	67.8				
7 Dec 2020	Fine	10:22	74.5	76.8	68.4	75	61.8	75	75
		10:27	76.2	77.5	64.9				
		10:32	76.8	77.7	76.0				
		10:37	76.6	78.1	69.5				
		10:42	74.2	77.8	64.9				
10 Dec 2020	Fine	10:47	68.3	72.1	63.9	75	61.8	75	75
		13:56	77.6	79.0	68.5				
		14:01	77.4	79.3	68.3				
		14:06	75.2	79.1	67.5				
		14:11	75.4	79.0	67.2				
14 Dec 2020	Fine	14:16	68.8	69.4	67.1	68	61.8	67	75
		14:21	68.3	69.2	66.5				
		14:26	72.1	75.2	65.7				
		14:31	66.0	68.5	63.2				
		14:36	64.0	65.0	62.6				
17 Dec 2020	Fine	14:41	64.5	65.7	63.1	75	61.8	75	75
		14:26	74.7	80.0	67.7				
		14:31	68.7	70.1	66.8				
		14:36	71.8	77.1	66.6				
		14:41	80.4	81.8	74.5				
21 Dec 2020	Fine	14:46	74.3	79.8	68.9	65	61.8	61	75
		14:51	69.9	70.9	68.9				
		14:02	64.4	65.7	62.8				
		14:07	64.2	65.3	62.6				
		14:12	64.3	65.6	62.8				
24 Dec 2020	Fine	14:17	65.5	66.4	63.2	73	61.8	73	75
		14:22	64.2	65.1	63.1				
		14:27	64.3	65.4	60.3				
		13:59	76.2	79.8	68.3				
		14:04	71.8	76.5	67.8				
28 Dec 2020	Fine	14:09	77.8	80.2	68.4	77	61.8	77	75
		14:14	67.6	69.1	65.8				
		14:19	67.7	68.9	65.9				
		14:24	67.4	68.7	65.6				
		15:07	79.0	81.8	69.3				
29 Dec 2020	Fine	15:12	78.1	81.1	66.1	68	61.8	67	75
		15:17	77.1	78.9	75.0				
		15:22	74.3	78.2	65.7				
		15:27	74.7	78.4	66.4				
		15:32	75.5	78.1	65.4				
31 Dec 2020	Fine	13:30	70.4	73.4	64.8	69	61.8	68	75
		13:35	71.0	76.0	63.0				
		13:40	67.5	70.9	61.4				
		13:45	68.0	70.9	61.8				
		13:50	62.1	64.2	58.4				
		13:55	62.1	64.2	58.5				
		13:44	68.2	89.2	66.9				
		13:49	68.2	69.0	67.0				
		13:54	68.6	69.9	66.9				
		13:59	69.0	70.5	66.7				
		14:04	69.0	70.5	67.0				
		14:09	68.3	70.0	66.5				

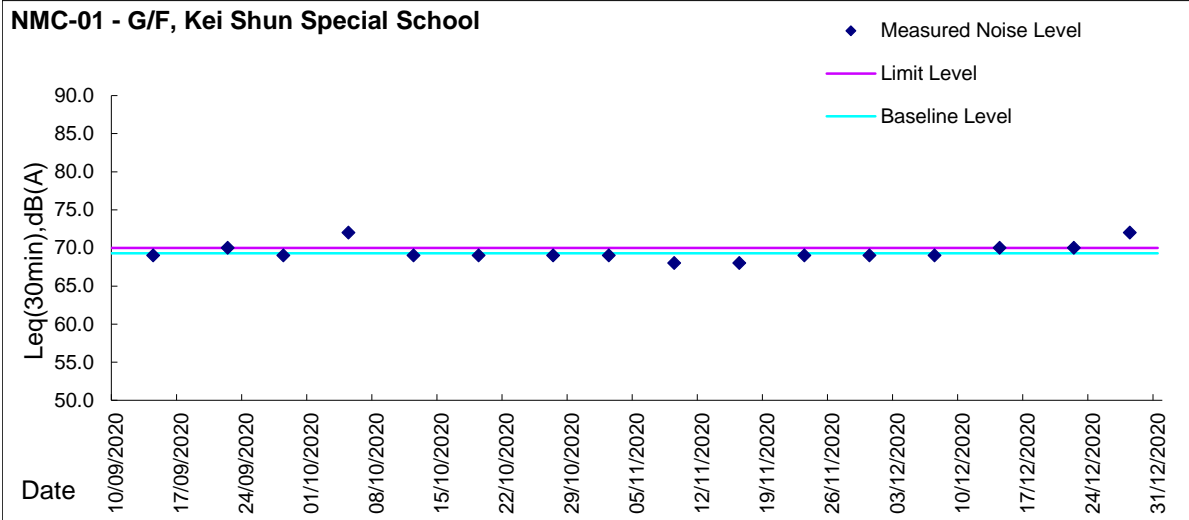
Remarks: Noise monitoring schedule on 3, 10, 17, 24 and 31 December 2020 were measured at 34/F, Roof top of Block B



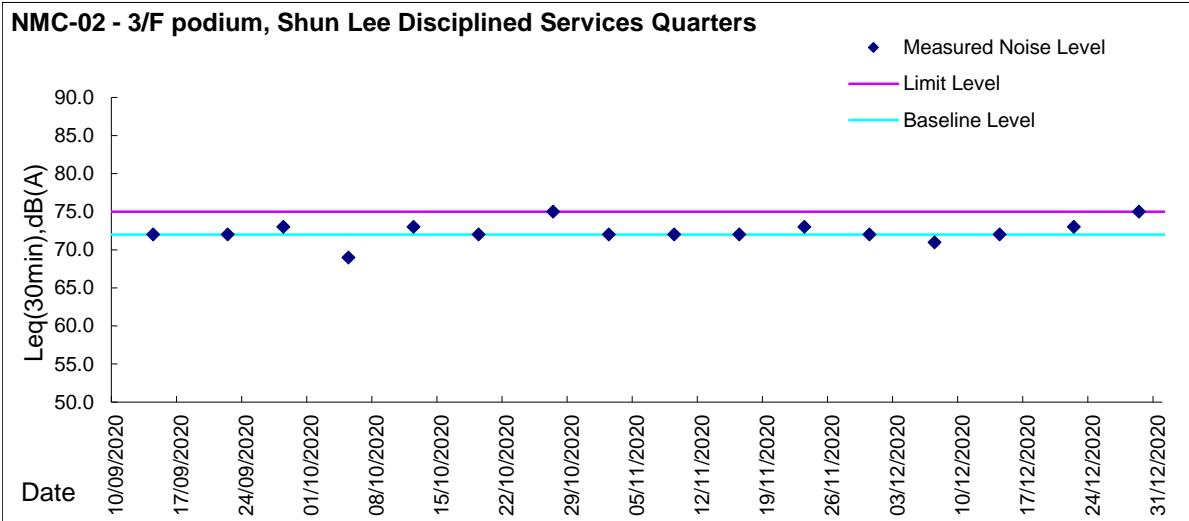
Graphic Presentation of Noise Monitoring Result

Day Time (0700 - 1900hrs on normal weekdays)

NMC-01 - G/F, Kei Shun Special School



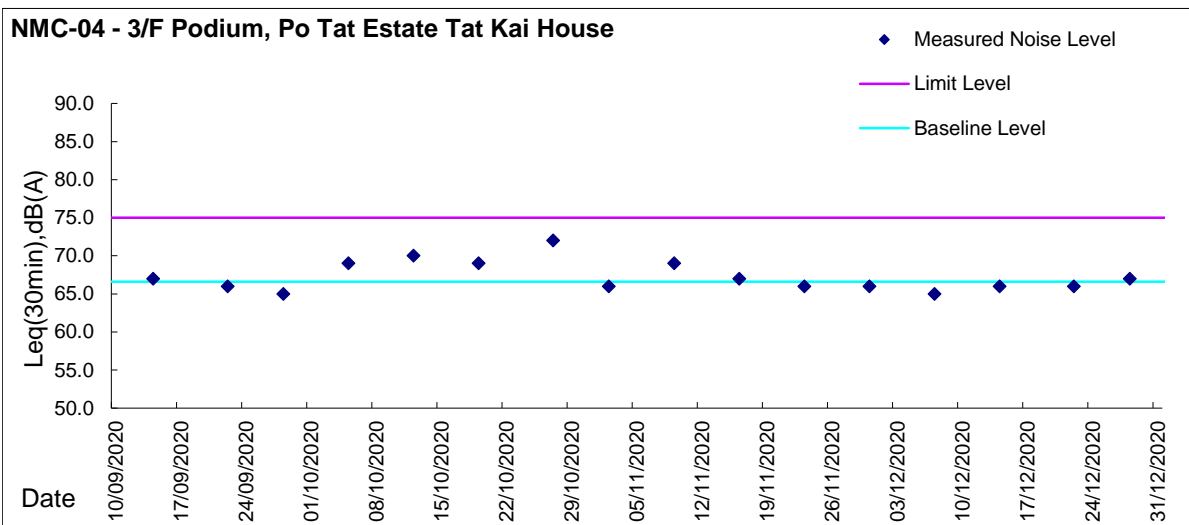
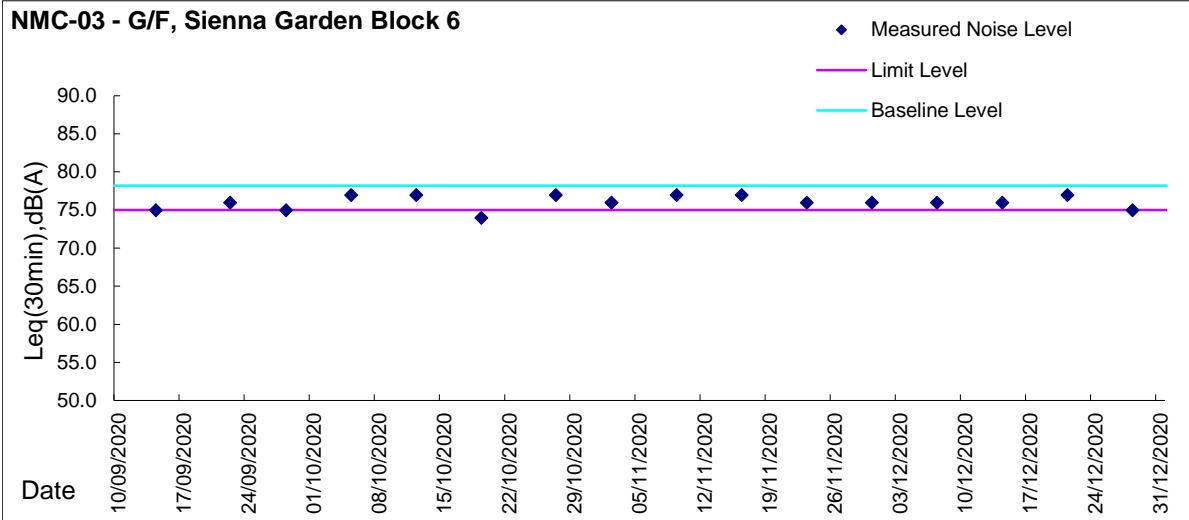
NMC-02 - 3/F podium, Shun Lee Disciplined Services Quarters





Graphic Presentation of Noise Monitoring Result

Day Time (0700 - 1900hrs on normal weekdays)





Graphic Presentation of Noise Monitoring Result

Day Time (0700 - 1900hrs on normal weekdays)

